

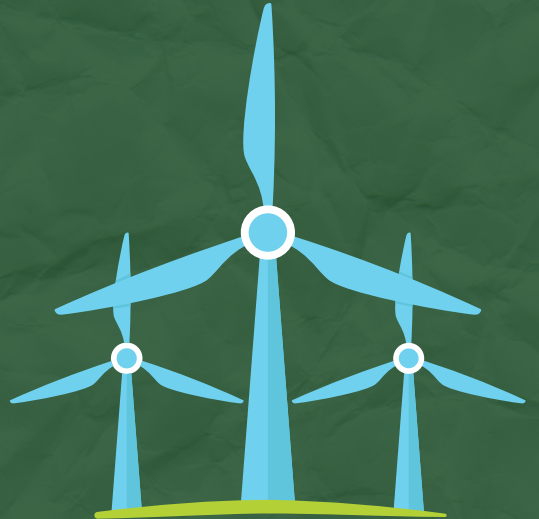
LANDFILL GAS & POWER



Landfill Gas & Power electricity generation plant is located at the **Red Hill Waste Management Facility**. The plant extracts landfill gas from cells **1 to 10** and converts it into safe, clean renewable energy.

The Landfill Gas & Power electricity generation plant was upgraded to increasing the capacity of the plant to 3.65MW.

LANDFILL GAS TO ENERGY



Operating since 1993, **EDL's Red Hill power station** is WA's first environmentally sustainable, waste to energy power station converting **landfill gas (LFG) to energy**.

The Red Hill landfill gas generators use the methane that is produced by the decomposition of organic materials in the Red Hill Waste Management Facility to produce clean, renewable electricity.

By doing so, we're playing our part in reducing the amount of harmful methane that would typically be released into the environment.

More information on EDL is available at <https://edlenergy.com/>