

FLOOD

AWARE

BE PREPARED



Be aware

Floods are unpredictable and can happen in regions that have never seen rain.

It is crucial that the community understand the existing risks, make informed decisions and are aware of potential flood behaviour for a range of events including those that are considered rare.

The *Flood Aware Be Prepared* campaign is based on the flood modelling and risk assessment study undertaken for the Swan and Helena Rivers, commissioned by the Eastern Metropolitan Regional Council, with active stakeholder involvement from State agencies and the City of South Perth.

What you need to know



Understand the potential flood risk to your area



Be prepared



Respond and stay informed

What is riverine flooding?

Riverine flooding occurs when heavy rainfall finds its way down creeks, rivers and into lakes causing water levels to rise and overflowing banks to inundate surrounding low-lying land. Riverine flooding is generally predictable, and the Bureau of Meteorology issues flood warnings for many river systems including the Swan and Helena Rivers.



كن حذرا

ان التنبؤ بالفيضانات غير ممكن. وقد تحدث الفيضانات في المناطق التي لم تشهد مطرا من قبل. من المهم أن يفهم المواطن المخاطر الحالية وأن يتخذ القرارات المبنية على معرفة الواقع وأن يكون على دراية بسلوك الفيضانات المحتمل في حالة حدوث مجموعة من الاحوال الجوية وبما في ذلك تلك الاحوال التي تعتبر نادرة.

ما تحتاج فعله

- ان تفهم مخاطر الفيضانات المحتملة على منطقتك
- ان تكون مستعد الاستعداد الصحيح في حالة حدوث فيضانات
- ان تستجيب لكافة الاعلانات الرسمية وان تبقى على اطلاع على كافة المعلومات والنشرات والاخبار

للمساعدة على فهم هذه المعلومات ، يرجى زيارة الموقع الالكتروني
tis.freeinterpreting@homeaffairs.gov.au

注意

洪水是不可预测的。可能发生在从未见过雨的地区。至关重要是。社区要了解现有的风险。做出明智的决定。并了解一系列事件的潜在洪水行为。包括那些被认为罕见的事件。

你需要知道的

- 了解你所在地区的潜在洪水风险
- 做好准备
- 作出回应并保持知情

欲了解此信息，请访问

tis.freeinterpreting@homeaffairs.gov.au 或者拨打1300 575 847

सतर्क रहें

बाढ़ अप्रत्याशित होती है और उन क्षेत्रों में हो सकती है जहां कभी बारिश नहीं हुई है। यह महत्वपूर्ण है कि समुदाय मौजूदा जोखिमों को समझे सूचित निर्णय लें और दुर्लभ मानी जाने वाली घटनाओं सहित कई घटनाओं के लिए संभावित बाढ़ व्यवहार से अवगत हों।

आपको क्या जानने की आवश्यकता है

- अपने क्षेत्र में संभावित बाढ़ जोखिम को समझें
- तैयार रहो
- प्रतिक्रिया दें और सूचित रहें

इस जानकारी को समझने में सहायता के लिए कृपया

tis.freeinterpreting@homeaffairs.gov.au पर जाएं या 1300 575 847 पर कॉल करें।

Flood behaviour

The City of South Perth is subject to both riverine and coastal flooding or a combination of both.



In small and more **frequent** flood events (1 in 10 chance), the flow will be contained within the Swan and Helena River channel. Initial inundation will occur in the areas where ground levels are lower, such as the Andrew Thompson Conservation Reserve, small parts of Clontarf foreshore and Cygnia Cove foreshore conservation area in Waterford. Larger and less frequent flood waters will break the banks and cause inundation of areas that are not normally prone to flooding.

Rare events will begin by causing inundation of the same low-lying areas but the flood water will rise across additional areas (approximately no less than 1 in 100 chance occurring). Inundation in rare events will occur mostly in the park areas along the Swan River in South Perth, including Sir James Mitchell Park.



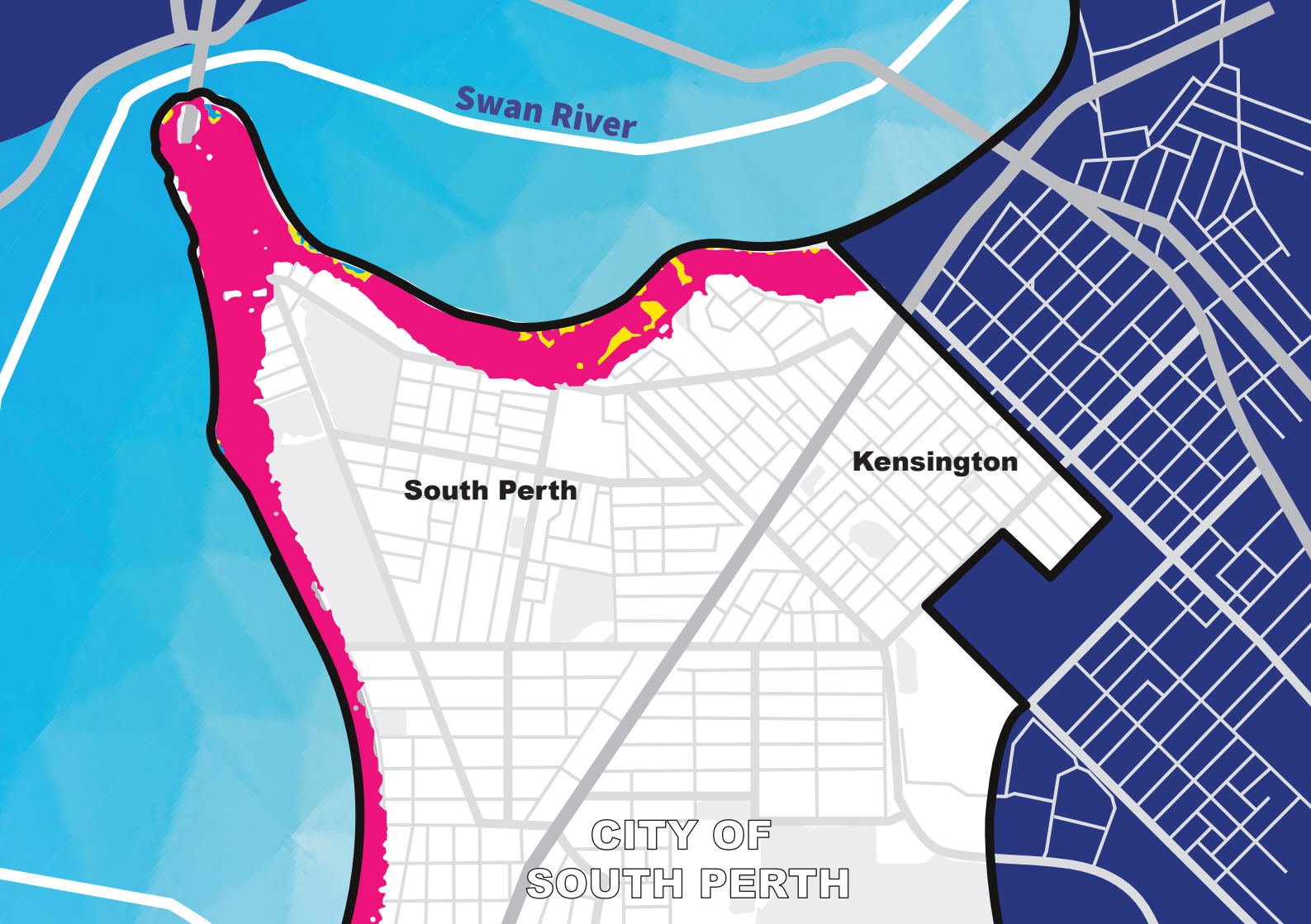
A **very rare event** has a 1 in 2,000 chance of occurring in a single year and includes the peninsula of South Perth, the foreshore including Sir James Mitchell Park, the areas surrounding the Royal Perth Golf Club, the parks near the Canning Bridge Station, Sandon and Bodkin Parks and the conservation foreshore in Waterford.

Isolation

The risk of potential isolation caused by flooding is an important consideration. Isolation means that your community may become cut-off from essential services such as shops, doctors, or pharmacies. It is worth considering that during flood events, essential services, such as power, may be impacted, which will increase the impact of isolation.

The risk of isolation is very low in the City of South Perth as it would occur during very rare flood events only. Isolation would potentially affect parts of the suburbs of South Perth, Kensington, Manning and Salter Point.



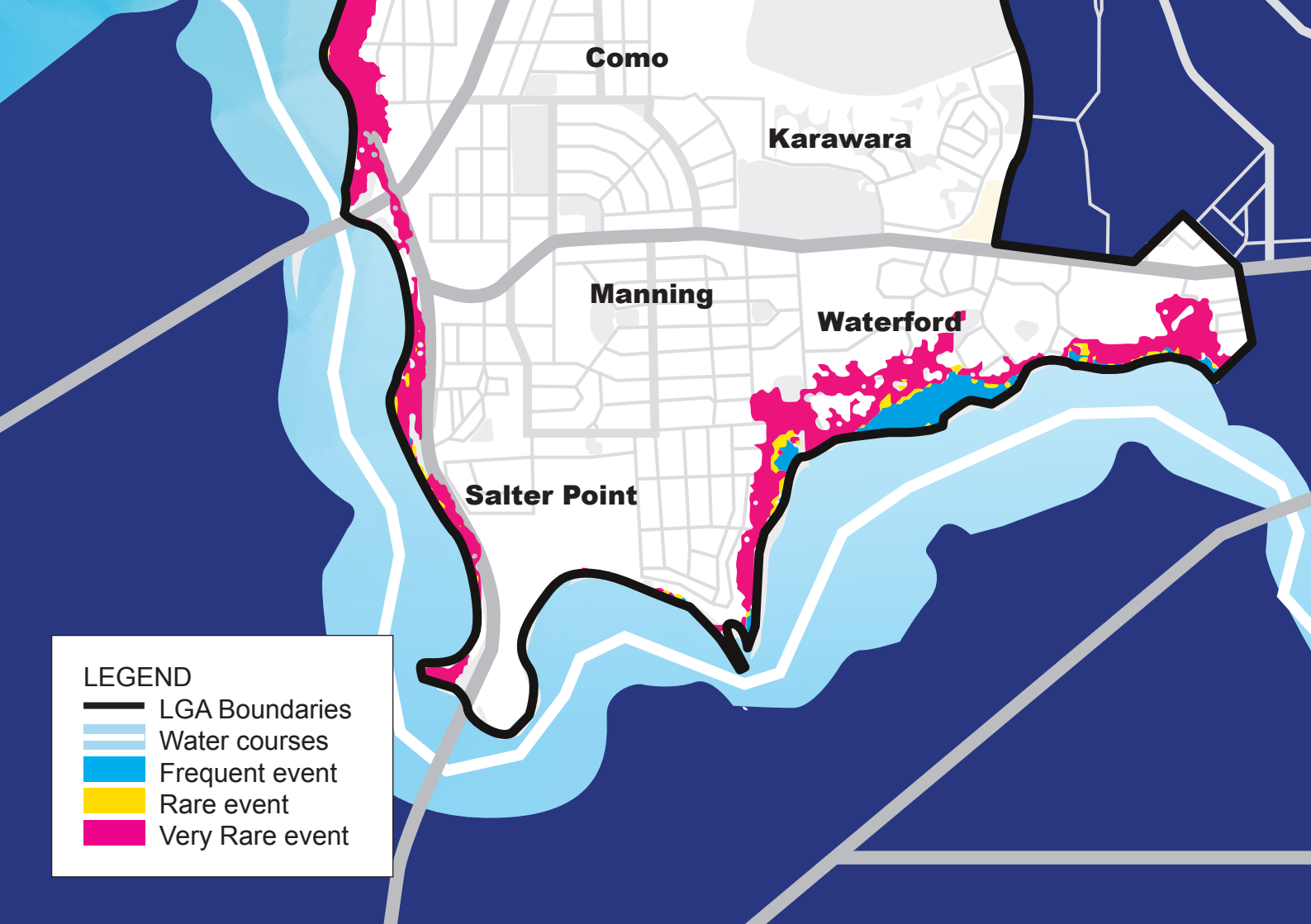


Swan River

South Perth

Kensington

CITY OF
SOUTH PERTH



Como






Karawara

Manning

Waterford

Salter Point

LEGEND

-  LGA Boundaries
-  Water courses
-  Frequent event
-  Rare event
-  Very Rare event

Flood facts

Did you know there are three circumstances when a flood event is more likely to happen?



When a river bursts its banks after heavy rain



When lakes or stormwater pipes overflow after heavy rain



During and after a cyclone or severe storm when low lying coastal areas flood due to storm surge from the ocean and heavy rain

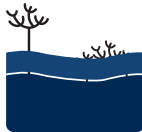
Did you know that bushfires dramatically change the land and increase the risk of floods?



During normal conditions, vegetation helps absorb rainwater



After an intense bushfire, burnt vegetation and charred soil form a water-repellent layer, blocking water absorption



During the next rainfall, water runs across the surface of the soil increasing the risk of flooding

Did you know that people who act early to prepare for a potential flood are more likely to keep themselves, their families, their pets and their properties safe?



Prepare the Family Ready Kit



Acknowledge 8 things to do if a flood is likely



Stay informed

Family Ready Kit

Preparing a Family Ready Kit for your home is an easy task and will help you immensely during any emergency event.

Your Family Ready Kit may include:



A waterproof bag containing essential documents such as Passports, birth and marriage certificates, home and other insurance papers, wills and other legal documents



Where possible, your essential documents should be stored electronically on a USB



Medications and sanitary supplies including special requirements for infants, elderly, injured, people with disability, and pets



Mobile phone chargers



Waterproof torch



First aid kit



Emergency contact numbers



Spare house and car keys

8 things to do if a flood is likely

Here are some suggestions on what you can do if a flood is likely to happen:



1. Monitor local radio, local TV and the Emergency WA or Bureau of Meteorology websites for flood and storm surge information and advice.



2. Turn off your home's gas, electricity and water.



3. Move your valuables, furniture and clothing to the highest point possible.



4. Secure loose objects and relocate vehicles, outdoor equipment, waste containers, chemicals and poisons.



5. Move your pets and animals to a safer location.



6. Check on your neighbours to make sure they're ready.

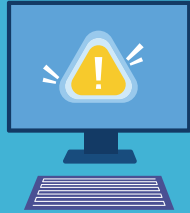


7. Put fuel in your vehicle.



8. If you're relocating to a safer place or welfare centre, do this early, before you see floodwaters.

In a rare event of a flood



Listen carefully to the radio, monitor the Emergency WA website and follow advice from authorities.



Only return home when authorities tell you it's safe. If you're returning to your home, follow the routes recommended by authorities. Do not drive through floodwaters.



If your property has sustained serious damage and you need help, call the SES on 132 500 for assistance. For life threatening emergencies, call 000.

Vulnerable institutions

Vulnerable institutions are non-residential areas where people may be less able to respond in a flood situation and need extra care, support, or protection.

Flood risk is likely to be higher for people within vulnerable institutions. In order to protect the people within, vulnerable institutions should carefully assess their risks and plan their response to a range of flood events, from frequent to very rare. Vulnerable institutions should have an evacuation plan and a flood free access route available during a rare flood event.

Vulnerable institutions include:



Aged or assisted care facilities.



Schools and other educational facilities.



Places where large crowds gather (such as sports stadiums).



Childcare facilities, including family day care.












Hospitals and rehabilitation centres.



Short-stay accommodation.

Stay informed

-  **ABC Radio** – frequency: 720 kHz AM
-  **DFES Public Information line:** 13 DFES (13 3337)
-  **Emergency WA website:** www.emergency.wa.gov.au
-  **DFES Facebook page:** facebook.com/dfeswa
-  **DFES Twitter feed:** twitter.com/dfeswa
-  **Bureau of Meteorology Cyclone Information:** 1300 659 210
-  **Bureau of Meteorology Land Weather and Flood Warnings:**
1300 659 213
-  **Weather and cyclone forecasts:** www.bom.gov.au
-  **Road conditions (Main Roads) :** 138 138

For more information, visit:



www.semc.wa.gov.au



www.floodawareprepared.com.au



www.southperth.wa.gov.au

Emergency contact numbers



Police, Fire, Ambulance (for life threatening emergencies): 000

State Emergency Service (SES) assistance: 132 500



This document has been printed
on 100% recycled paper.

