



WANTED

WATTLES

Acacia sp.

Glossary

Bi-pinnate

Twice pinnately divided; a compound leaf with leaflets arranged in the same way as a feather.

Phyllodes

A leaf whose blade is much reduced or absent.

Spike

A narrow inflorescence with several stalkless flowers.

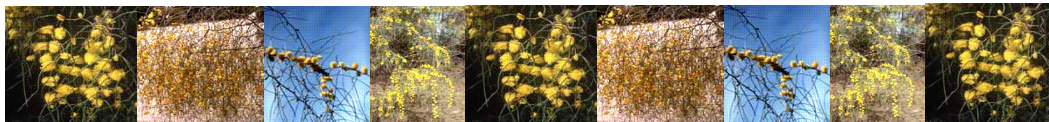
For More Information

Contact

Eastern Hills Catchment Management Program
Tel: (08) 9424 2222

Shire of Mundaring Bushcare Co-ordinator
Tel: (08) 9290 6685

Shire of Kalamunda Bushcare Co-ordinator
Tel: (08) 9257 9936



Introduction

Wattle species are native in eastern Australia and several species have been planted in WA in gardens, timber plantations, on farms as windbreaks or in early rehabilitation works.

Some of these species have become naturalised and hence, particularly invasive weeds. They are mostly colonisers of roadsides and bushland. *A. decurrens* and *A. longifolia*, invade creeklines and *A. melanoxylon* and *A. podalyriifolia* are troublesome weeds of swamps and coastal areas.

A family of over 3,000 species, most species have been listed for at least 25 years. The main weed species are:

- *Acacia baileyana* (Cootamundra Wattle);
- *A. iteaphylla* (Flinders Range Wattle);
- *A. decurrens* (Black Wattle)
- *A. longifolia* (Sydney Golden Wattle)
- *A. podalyriifolia* (Queensland Silver Wattle)
- *A. dealbata* (Silver Wattle)
- *A. melanoxylon* (Blackwood)

Some species may be confused with *Acacia pentadenia* (Karri Wattle).

Origin

Eastern Australia.

Lifeform

Trees/shrubs.

Description:

Up to 10 m tall; bark will vary between species.

A. melanoxylon: Up to 30 m tall

Leaves: Silvery; bi-pinnate; 3-14 cm long.

A. longifolia/A. melanoxylon/A. podalyriifolia : Undivided leaf-like phyllodes.

Flowers/Seedheads: Bright yellow sprays/spikes; globular;
A. melanoxylon: Cream; in short sprays

Reproduction & Dispersal

Prolific seeders with seeds able to survive many years. Dispersed by birds, water and ants.

Growing Habit

A. melanoxylon may form dense thickets after disturbance.

Distribution

Perth; Southwest.

A. Longifolia/melanoxylon : Perth-Albany

A. dealbata: Perth-Albany; Karri forest in Porongurup Range.

A. podalyriifolia: Jurien Bay-Walpole.

Flowering Season

Acacia baileyana/A.

podalyriifolia Winter

A. dealbata/decurrens/

longifolia : Late winter-spring.

A. melanoxylon: Spring

Control

Manual Removal

In large dense stands, a hot fire may be used to kill old trees and encourage seed to germinate so they may be controlled by herbicides or manually.

Hand pull seedlings, ensuring the roots are removed by using a weeding fork. Avoid further burning, as this will encourage seedling establishment.

Repeat the treatment every 2-3 years to ensure that no trees reach an age where they can set seed.

Do not buy or plant these species in gardens.

Chemical Treatment

Apply herbicides in spring or when trees are actively growing. Various herbicides and application methods for treating mature plants and juveniles.

Please see "Herbicides and Pesticides" fact sheet for more information about spraying chemicals.



In partnership with

