

# MINUTES

## Waste Management Community Reference Group

A meeting of the Waste Management Community Reference Group was held at the EMRC, 226 Great Eastern Highway, Ascot WA 6104 on **Monday, 23 November 2020**. The meeting commenced at 6:00pm

### ATTENDANCE

#### WMCRG Committee Members

Ms Dianne Katscherian	Chairperson
Mr Malcolm Barker	Member
Mr Edwin Dell	Member
Mr Anthony Fowler	Member
Ms Jodi Gardiner	Member
Ms Belinda Hamilton	Member
Mrs Gina Ogilvie	Member
Mr Nicholas Sibbel	Member
Mr Mark Simpson	Member
Mr Alan Wicks	Member

#### Apologies

Ms Jodi Gardiner (post meeting)	Member
Ms Belinda Henderson	Member
Ms Carmel Luck (post meeting)	Deputy Chairperson
Ms Kristy Walden	Member

#### EMRC Officers

Mr Marcus Geisler	Chief Executive Officer
Mrs Wendy Harris	Chief Sustainability Officer
Mr Brad Lacey	Chief Operating Officer
Mr Douglas Bruce	Chief Project Officer
Mr Stephen Fitzpatrick	Waste & Resources Recovery Specialist
Ms Kerry Wilson	Waste Coordinator (Transfer Stations)
Ms Isabelle Marie	Coordinator Waste Education
Ms Annette Rakich	Personal Assistant (Minutes)

#### Resignation of WMCRG Members

Mr Ray Lewis	Resignation August 2020
Ms Robyn Walsh	Resignation November 2020

## 1 Opening

The Chairman advised that Mr Ray Lewis has resigned from the WMCRG in August 2020. Ray has been a great asset to the group and contributed to the group since inception, 2004. Ms Robyn Walsh resigned as she no longer resides in the eastern metropolitan region. The Chairman thanked Ray and Robyn for their contributions.

## 2 Confirmation of Minutes of Previous Meeting(s)

The minutes of the Waste Management Community Reference Group meeting held on 7 February 2020 which have been distributed, were confirmed as an accurate and true reflection.

**Moved Mr Dell**

**Seconded Mr Simpson**

## 3 EMRC Officer Updates

Presentations were provided by the EMRC Officers as follows. Refer to **attachment 1** for the presentation.

- a) The Chief Executive Officer (CEO) provided an update on the changes at an organisational level. The presentation focused on the Next Phase of the EMRC, Future EMRC Pillars and the Organisational Structure Alignment.

The CEO provided an update on the new EMRC Council meeting structure which was resolved at the Ordinary Council meeting on 23 October 2020. Most committees were disbanded, including the Waste Advisory Committee (WAC) which was a link to the WMCRG. The EMRC will engage more informal meetings rather than formal. The WMCRG will continue as an informal group and will meet as required.

- b) The previous Chief Project Officer (CPO), Mr Steve Fitzpatrick, introduced the new CPO, Mr Douglas Bruce. Douglas provided the group some background of his previous employment as Manager of the Projects Business Unit at the City of Swan, delivering the capital works projects for the past ten years. Douglas has a good knowledge of the eastern metropolitan area and his background is in engineering and project delivery.

- c) The new Waste & Resources Recovery Specialist (Steve Fitzpatrick) provided a Projects update:

- Interim Processing Of FOGO
- Wood Waste to Energy Plant at Hazelmere Resource Recovery Park (Hazelmere)
- Permanent FOGO Facility at the Red Hill Waste Management Facility (Red Hill)
- Waste Transfer Station at Hazelmere
- Administration & Workshop Building at Hazelmere
- Community Recycling Centre at Hazelmere
- Development of Lots 8, 9 & 10 – Red Hill
- Plastics sorting trial at Baywaste

- e) The Chief Operating Officer (COO) provided an update on the Operations at Red Hill, Hazelmere, Coppin and Mathieson Roads and Baywaste Transfer Stations:
- Class IV Cell – Red Hill Grinding Power Poles to maximise capacity
  - Mulch and marketing
  - Hazelmere wood fines
  - Hazelmere Polystyrene Compacting Unit
  - Hazelmere Soft Landing Mattress
  - Hazelmere C & I Plant
  - Transfer Stations / Community Recycling Centre's
  - Container Deposit Scheme (CDS)
- f) The Waste Coordinator Transfer Stations (Community Recycling Centre's) responded to questions regarding CDS and the streaming of drop off points for various materials such as polystyrene, paint and aerosols. The Waste Coordinator invited the group to visit the Community Recycling Centres' individually for the EMRC to gain some feedback in terms of what is useful and what members like about the centres and any structured advice of how the service could be improved. To make an appointment, contact Kerry Wilson via email [Kerry.wilson@emrc.org.au](mailto:Kerry.wilson@emrc.org.au) to arrange visits during the following days.
- Mathieson Transfer Station is open, Thursday, Friday, Saturday, Sunday
  - Coppin Road is open Monday, Tuesday, Saturday and Sunday
  - Baywaste is open seven days a week
- g) Chief Sustainability Officer (CSO) provided information to the group regarding what the business unit covers.
- Natural and Urban environment; and
  - The Waste Education Team

The Sustainability Team is about sustainability as a holistic picture. The team are currently embarking on the Net-Zero project. It is about achieving an overall balance between greenhouse gas emissions produced and greenhouse gas emissions taken out of the atmosphere together with net zero across corporate and community facilities and freight emissions.

In the past 18 months, the Waste Education Team has grown from two to six staff. The CSO acknowledged the Waste Education Officer, Joanne Gray for her dedication to the WMCRG and thanked her for her expertise in delivering the message of Waste Education. Isabelle Marie has been awarded the Coordinator role in the Waste Education Team and will attend future WMCRG meetings. The Coordinator Waste Education responded to questions within the attachment.

- **Attachment 2** - Waste Education initiatives is attached (January 2020 to October 2020).

The CSO advised that when it comes to FOGO education delivered to the community, this can be very sensitive depending on which local council they reside and education, for FOGO, needs to be delivered in a timely manner. Should members have questions, they should be directed to Isabelle via email [Isabelle.marie@emrc.org.au](mailto:Isabelle.marie@emrc.org.au).

## 4 Chairperson – Member Individual Input

### QUESTIONS FROM WMCRG MEMBER – ALAN WICKS

**Question 1:** Is there any scope to offer out / hire out the commercial sorting facility to third parties to use, possibly with their own manpower? In a similar way the wood to energy plant and the methane capture do.

**Response:** *It is possible to lease the C&I Plant to third parties but there are constraints on this under the Local Government Act 1986. We have done this with the landfill gas power station at Red Hill Waste Management Facility but this is not the case with the Wood Waste to Energy Plant which the EMRC will operate.*

**Question 2:** Are there any plans to use the Neerabup composting plant for excess FOGO?

**Response:** *The Neerabup composting plant is contracted to the Mindarie Regional Council member Councils for mixed waste feedstock so it could do FOGO but only if all other waste was also FOGO. There are other alternatives if the EMRC facility is not ready to meet member Council requirements.*

**Question 3:** Is it feasible to use already deposited waste at Redhill “top waste” for the waste to energy plant when it opens?

**Response:** *No, it isn't practical or required under the contract with East Rockingham Resource Recovery Facility (RRF), which is a “waste arising” type of contract.*

### QUESTIONS FROM WMCRG MEMBER – DIANNE KATSCHERIAN (Chairperson)

**Question 1:** How the WMCRG can be more involved in activities and what can members do to assist with the EMRC/Council programs.

**Response:** *We need to look at communicating information more on a regular basis. The EMRC have just gone from formal to informal meetings. The EMRC are open to suggestions of how much you want to be here and how much members want to be involved.*

**Question 2:** Members would like to be aware of what the future holds for them

**Response:** *Members are a valuable resource for the EMRC and in particular to provide the views of the community and to engage the community support interests and for future projects. The EMRC see the group as our conduit out to the community and value the input. This group are the EMRC's eyes and ears to the community.*

**Question 3:** Members would like to have a greater involvement in Waste & Waste Education activities?

**Response:** *Will endeavour to have greater involvement from the group, where possible and recognising that at times it won't be practical for when decisions need to be made quickly. The EMRC will draw on the groups expertise when time allows. The introduction to FOGO in the Hills will be a different introduction to FOGO on the plains and this is where this group will play a part in guiding and decision making of how we deal with these issues.*

**Question 4:** Dianne would like to emphasise the potential value of members and discuss some ideas on how we could go forward.

**Response:** *It's a matter of understanding the skill set of the various members so that the EMRC know where the expertise lies and how do we get that information from the members*



**Statement 5:** Dianne mentioned with the meetings going informal, this will provide the opportunity for a good platform to offer more discussion and interaction to deliver feedback on community waste education. It was expressed that the group are willing to assist in helping with the plans and programs at a community level.

**Response:** *The statement was acknowledged.*

## 5 2021 Future Meetings of the WMCRG

It is proposed that the meetings of the Waste Management Community Reference Group for 2021, be as follows.

Note: As discussed at the meeting, these meeting dates are flexible.

Monday	12 April	(if required)	EMRC Administration Building
Monday	11 October	(if required)	EMRC Administration Building

## 6 Close of Meeting

The meeting closed at 8:00pm.

# Waste Management Community Reference Group

23 November 2020

## EMRC Updates



1

### Next Phase of the EMRC

Current EMRC activities



Recovery

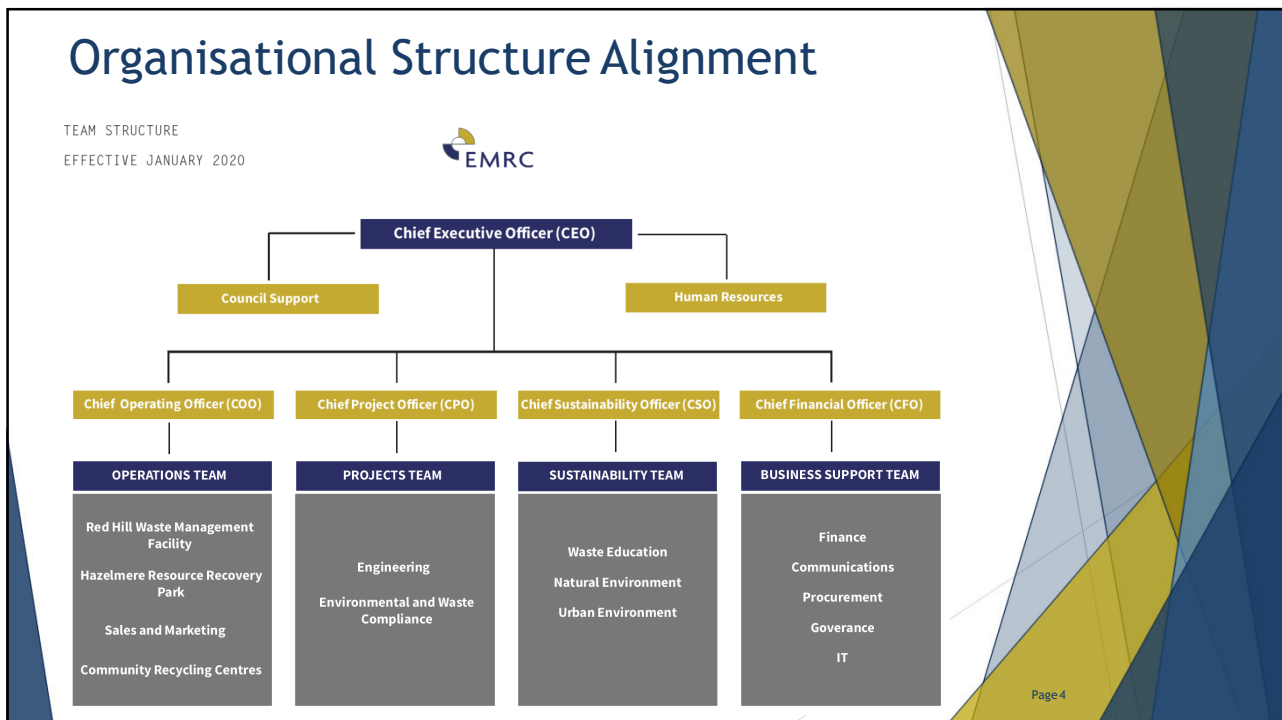
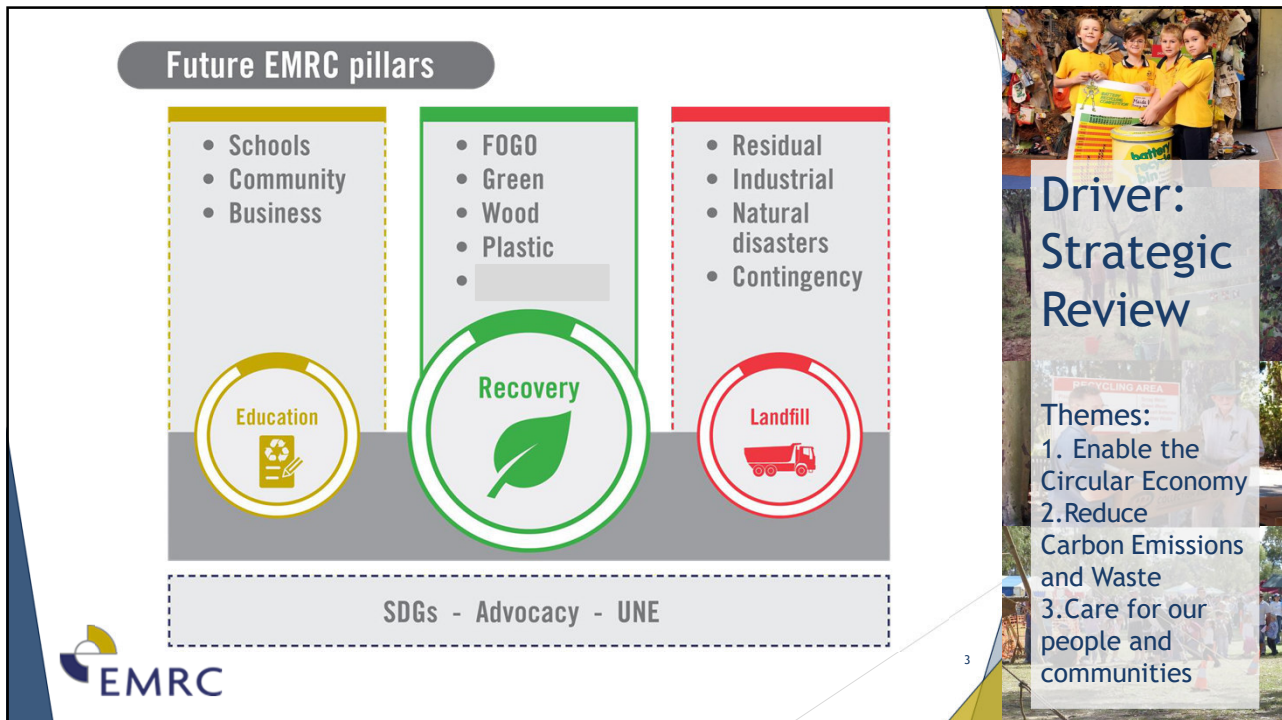


Education

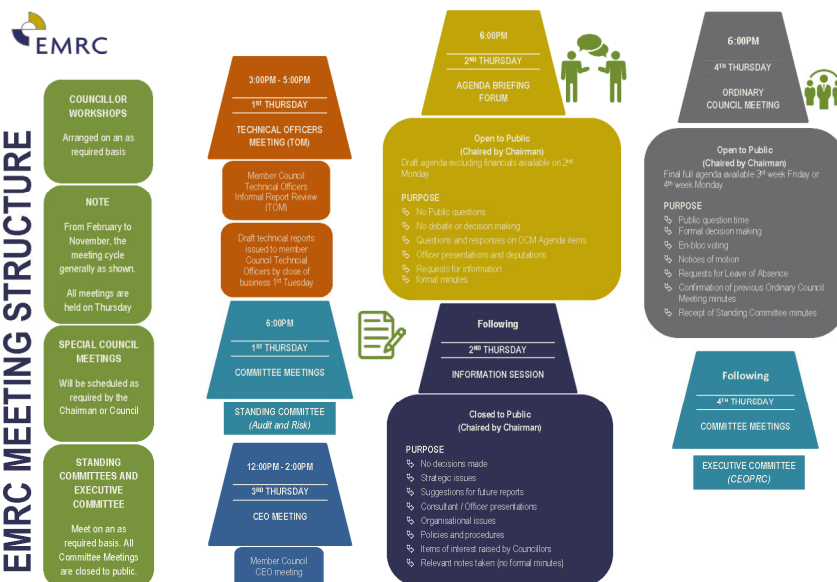


Data - Best  
Practice -  
Advocacy





## Meeting Structure



## Projects Update

- ▶ Interim Processing of FOGO
- ▶ Wood Waste to Energy Plant
- ▶ Permanent FOGO Facility
- ▶ Waste Transfer Station
- ▶ Community Recycling Centre
- ▶ Development of Lots 8,9,10 Red Hill

## Interim FOGO Facility, Red Hill - 3 August start date for Town of Bassendean collections



## MAF system, 20 November 2020





## Wood Waste to Energy Plant

- ▶ Construction progressing
- ▶ Piping almost completed
- ▶ Electrical tender awarded
- ▶ Mechanical and electrical completion due in early 2021
- ▶ Recruitment of operators completed



9

## Pyrolysis kiln and reformer



10

## WWTE Plant



11

## Permanent FOGO Facility

- ▶ Feasibility study endorsed at September Council meeting
- ▶ Next steps
  - ▶ Call for tenders - December 2020
  - ▶ Evaluate tenders
  - ▶ Business case to proceed
  - ▶ Recommend preferred tenderer
  - ▶ Award tender
  - ▶ Construction and commissioning
  - ▶ Operations commence - March 2023



12



## Examples of FOGO Processing Facilities



13

## Waste Transfer Station, Hazelmere

- ▶ Works Approval received
- ▶ Purpose: Deliver residual waste to East Rockingham Waste to Energy Facility

14

## Hazelmere, Waste Transfer Station - Location

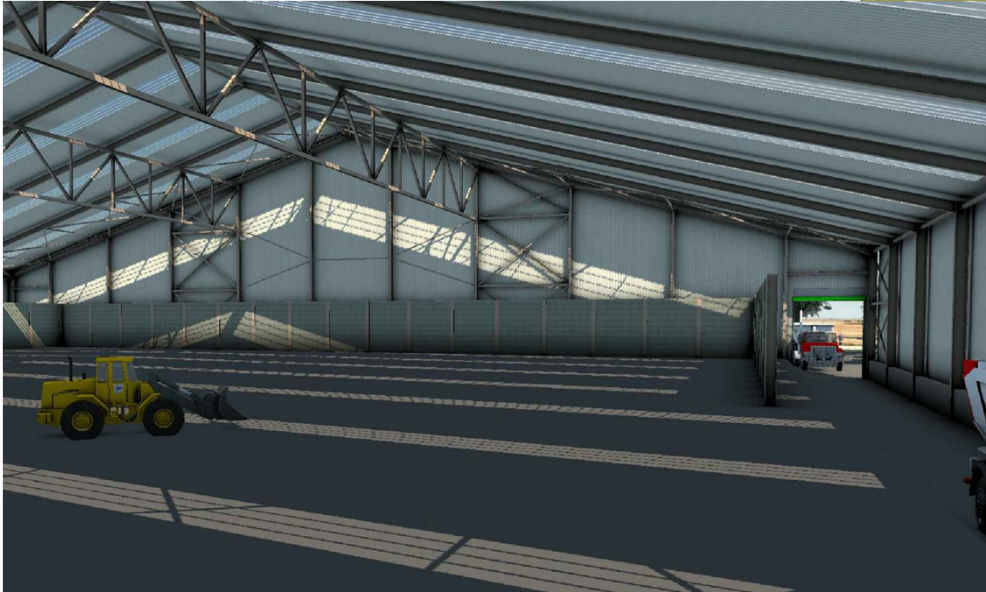


15

## Waste Transfer Station - 3D Visualisation



## Waste Transfer Station - 3D Visualisation



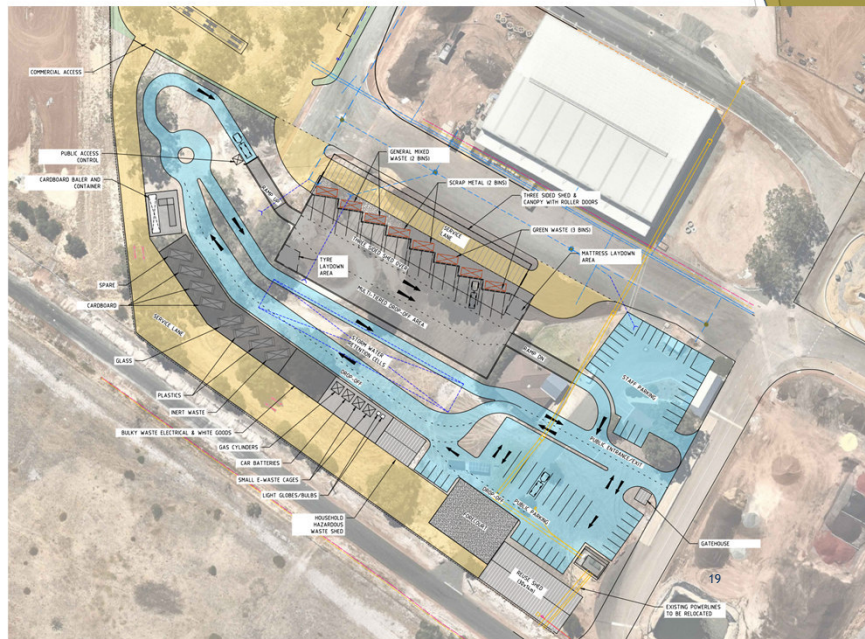
## Community Recycling Centre

- ▶ Works Approval received from DWER
- ▶ Business case being prepared for future meeting of Council

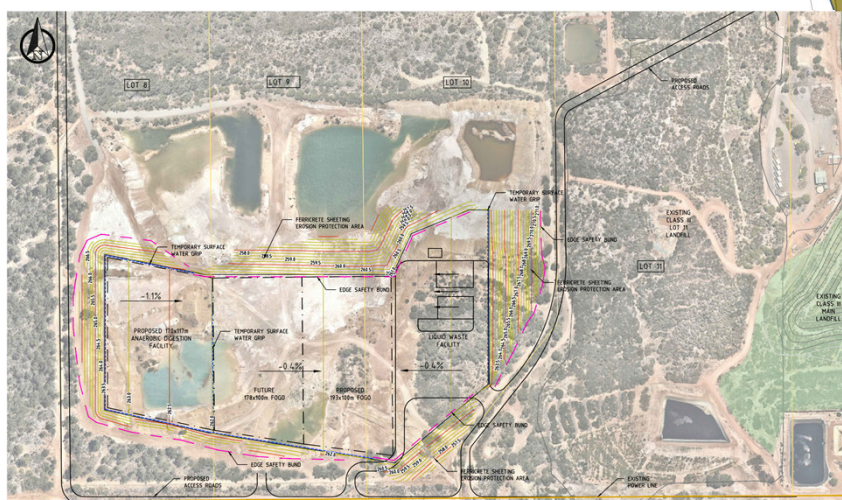




## Community Recycling Centre - Layout



## Development of Lots 8,9,10 Red Hill



20

## Other projects

- ▶ CDS Refund point at Hazelmere and Red Hill with Workpower
- ▶ Plastics sorting trial at Baywaste with Chairay



21

## Operations Update



22



## Red Hill Waste Management Facility



## Red Hill Waste Management Facility

### ► Class IV Cell

- DWER granted licence amendment to shred pole waste within Class IV cell
- Grinding pole waste to maximise capacity



# Red Hill Waste Management Facility

## ► Mulch

- Further screening to produce premium mulch
- Bagging mulch and soil conditioner into 20L bags
- Marketing and Brochures



25

# Hazelmere Resource Recovery Park





## Hazelmere Resource Recovery Park

- ▶ **Broiler Growers Bedding Contract**
  - ▶ Develop woodfines specifications for animal bedding
  - ▶ Time and Motion studies
  - ▶ Signed Supply Agreement
- ▶ **Polystyrene compacting unit**
  - ▶ Grant awarded to the EMRC to purchase a polystyrene compactor unit
  - ▶ Process polystyrene waste using polystyrene compacting unit
  - ▶ Final product will be sent for reprocessing



27

## Hazelmere Resource Recovery Park

- ▶ **Western Power**
  - ▶ Accept pole waste from Western Power and its Contractors at HRRP
  - ▶ Licence Amendment application granted by DWER
  - ▶ Processing Power Poles
    - ▶ Dismantle and recycle all steel components
    - ▶ Cut-off pole butts from the non-treated poles
    - ▶ Send CCA-treated poles to Red Hill for appropriate Class IV landfilling.
- ▶ **Soft Landing Mattress**
  - ▶ Recovers up to 75% of all mattress components



28

## Hazelmere Resource Recovery Park

### ► New Agreements for Wood Waste Supply

- Aussie Crates
- City of Cockburn
- Bristle Roofing
- CEVA (Cable Drums)



29

## Hazelmere C&I Plant

- Currently process a small amount of C&I waste for the likes of Ikea and Bunnings
- Plans to revive the C&I sorting facility by:
  - Processing council bulk verge waste
  - Sourcing additional C&I waste from commercial entities



30

## Transfer Stations / Community Recycling Centres

### ► Baywaste Transfer Station

- 6-months trial phase completed
- A 4-year agreement with an additional 2-year option awarded to the EMRC
- Working on implementing Paintback collection

### ► Coppin Road

- Implemented CDS Collection 1/10/2020
- Receiving 10,000 to 12,000 containers daily



31

## CONTAINER DEPOSIT SCHEME (CDS)

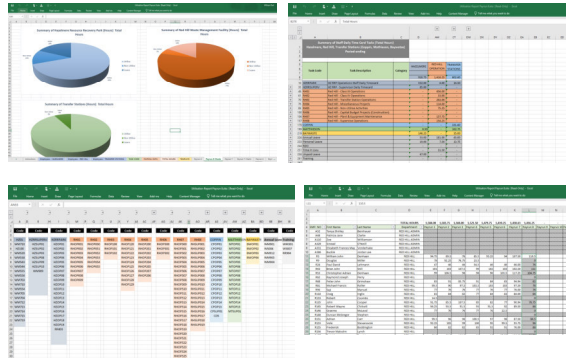
Coppin Road - Community Recycling Centre Team



32

## Summary of Operational Focus to date

- ▶ Safety
- ▶ Cost Control (P&L)
  - ▶ Utilisation Report



33

## Summary of Operational Focus to date

- ▶ Plant
  - ▶ Refurbishment



34



# The End.....

► Questions



35