



MINUTES

CERTIFICATION OF CONFIRMATION OF COMMITTEE MEETING MINUTES

9 AUGUST 2012

I, Cr Cuccaro, hereby certify that the following minutes pages 1 to 34 of the Meeting of **RESOURCE RECOVERY COMMITTEE** held on 9 August 2012 were confirmed at a meeting of the Committee held on 4 October 2012.

A handwritten signature in blue ink, appearing to read "Tony Cuccaro", is written over a horizontal line.

Signature

Cr Tony Cuccaro

Person presiding at the Committee Meeting held on 4 October 2012

RESOURCE RECOVERY COMMITTEE

MINUTES

9 August 2012

(REF: COMMITTEES-14224)

A meeting of the Resource Recovery Committee was held at the EMRC Administration Office, 1st Floor, 226 Great Eastern Highway, BELMONT WA 6104 on **Thursday, 9 August 2012**. The meeting commenced at **5:00pm**.

TABLE OF CONTENTS

1	DECLARATION OF OPENING AND ANNOUNCEMENT OF VISITORS	1
2	ATTENDANCE, APOLOGIES AND LEAVE OF ABSENCE PREVIOUSLY APPROVED	1
3	DISCLOSURE OF INTERESTS	1
4	ANNOUNCEMENT BY THE CHAIRMAN OR PERSON PRESIDING WITHOUT DISCUSSION	1
5	CONFIRMATION OF MINUTES OF PREVIOUS MEETINGS	2
5.1	<i>MINUTES OF THE RESOURCE RECOVERY COMMITTEE MEETING HELD ON 5 APRIL 2012 (Ref: Committees-13900)</i>	
6	PRESENTATIONS	2
6.1	<i>WASTE EDUCATION STRATEGY RESEARCH</i>	2
7	ANNOUNCEMENT OF CONFIDENTIAL MATTERS FOR WHICH THE MEETING MAY BE CLOSED TO THE PUBLIC	2
8	BUSINESS NOT DEALT WITH FROM A PREVIOUS MEETING	2
9	REPORTS OF OFFICERS	3
9.1	<i>RESOURCE RECOVERY PROJECT UPDATE (Ref: Committees-14357)</i>	3
9.2	<i>HAZELMERE PYROLYSIS PROJECT UPDATE (Ref: Committees-14362)</i>	14
9.3	<i>WASTE EDUCATION PROGRESS REPORT (Ref: Committees-14363)</i>	18
9.4	<i>WASTE AND RECYCLE CONFERENCE 2012 (Ref: Committees-14499)</i>	22
10	CONFIDENTIAL MATTERS FOR WHICH THE MEETING MAY BE CLOSED TO THE PUBLIC	34
11	GENERAL BUSINESS	34
12	FUTURE MEETINGS OF THE RESOURCE RECOVERY COMMITTEE	34
13	DECLARATION OF CLOSURE OF MEETING	34



1 DECLARATION OF OPENING AND ANNOUNCEMENT OF VISITORS

The Chairman opened the meeting at 5:00pm.

2 ATTENDANCE, APOLOGIES AND LEAVE OF ABSENCE PREVIOUSLY APPROVED

Committee Members

Cr Tony Cuccaro (Chairman)	EMRC Member	Shire of Mundaring
Cr Alan Radford (Deputy Chairman)	EMRC Member	City of Bayswater
Cr Jennie Carter	EMRC Member	Town of Bassendean
Cr Glenys Godfrey	EMRC Member	City of Belmont
Cr Frank Lindsey (<i>from 5:12pm</i>)	EMRC Member	Shire of Kalamunda
Cr David Färdig	EMRC Member	City of Swan
Mr Doug Pearson	Director Technical Services	City of Bayswater
Mr Ric Lutey	Director Technical Services	City of Belmont
Mr Sam Assaad (Deputising for Mr Higham)	Manager Infrastructure Services	Shire of Kalamunda
Mr Shane Purdy	Director Infrastructure Services	Shire of Mundaring
Mr Jim Coten	Executive Manager Operations	City of Swan
Mr Peter Schneider	Chief Executive Officer	EMRC

Apologies

Mr Simon Stewert-Dawkins	Director Operational Services	Town of Bassendean
Mr Clayton Higham	Director Development and Infrastructure Services	Shire of Kalamunda

Deputy Committee Members - Observers

Cr Gerry Pule	EMRC Member	Town of Bassendean
Cr Alan Pilgrim	EMRC Member	Shire of Mundaring

EMRC Officers

Mr Stephen Fitzpatrick	Manager Project Development
Mr Brian Jones	Director Waste Services
Mr Hua Jer Liew	Director Corporate Services
Ms Tania Wells	Waste Education Coordinator
Ms Annie Hughes-d'Aeth	Administration Support Officer

3 DISCLOSURE OF INTERESTS

Nil

4 ANNOUNCEMENT BY THE CHAIRMAN OR PERSON PRESIDING WITHOUT DISCUSSION

Nil



5 CONFIRMATION OF MINUTES OF PREVIOUS MEETINGS

5.1 MINUTES OF THE RESOURCE RECOVERY COMMITTEE MEETING HELD ON 5 APRIL 2012

That the Minutes of the Resource Recovery Committee meeting held on 5 April 2012, which have been distributed, be confirmed.

RRC RESOLUTION(S)

MOVED CR GODFREY SECONDED CR RADFORD

THAT THE MINUTES OF THE RESOURCE RECOVERY COMMITTEE MEETING HELD ON 5 APRIL 2012, WHICH HAVE BEEN DISTRIBUTED, BE CONFIRMED.

CARRIED UNANIMOUSLY

6 PRESENTATIONS

6.1 WASTE EDUCATION STRATEGY RESEARCH

The Waste Education Coordinator provided a presentation on the findings from the research carried out by Research Solutions on Waste Education Strategies using focus groups and online surveys of residents in the region. A brief discussion ensued.

Cr Lindsey entered the meeting at 5:12pm.

7 ANNOUNCEMENT OF CONFIDENTIAL MATTERS FOR WHICH THE MEETING MAY BE CLOSED TO THE PUBLIC

Nil

8 BUSINESS NOT DEALT WITH FROM A PREVIOUS MEETING

Nil



9 REPORTS OF OFFICERS

9.1 RESOURCE RECOVERY PROJECT UPDATE

REFERENCE: COMMITTEES-14357

PURPOSE OF REPORT

To update Council on the progress of the Resource Recovery Facility (RRF) project.

KEY ISSUES AND RECOMMENDATION(S)

- The Office of the Environmental Protection Authority (OEPA) approved the final version of the Public Environmental Review (PER) as being suitable for public review on 11 July 2012.
- The PER is available for public review for an 8 week period between 23 July and 17 September 2012.
- Printed copies of the PER are available for purchase from the EMRC for \$10 including a compact disc (CD) or the CD only can be obtained free of charge. The CD contains the full version of the PER plus background documents referenced in the PER.
- Two community information sessions are scheduled for 13th and 15th August 2012 at Gidgegannup and Mundaring respectively.
- Other communication methods include the updated website which has an electronic version of the PER, community newspaper and West Australian advertising, poster displays in selected libraries and newsletter drops in Gidgegannup.

Recommendation(s)

That the report be received.

SOURCE OF REPORT

Manager Project Development

BACKGROUND

On 30 April 2009, Council resolved to proceed with the Expression of Interest process.
(Ref: Committees-9127)

At the 27 August 2009 meeting of Council it was resolved that (Ref: Committees-9571):

"1. THE FOLLOWING RESPONDENTS TO THE EXPRESSION OF INTEREST ARE LISTED AS ACCEPTABLE TENDERERS:

- A. ENERGOS AS;*
- B. EVERGREEN ENERGY CORPORATION PTY LTD;*
- C. GRD MINPROC LIMITED;*
- D. MOLTONI ENERGY PTY LTD;*
- E. SITA ENVIRONMENTAL SOLUTIONS;*
- F. TRANSPACIFIC CLEANAWAY LIMITED; AND*
- G. WSN ENVIRONMENTAL SOLUTIONS.*



Item 9.1 continued

2. *THE FOLLOWING RESPONDENTS TO THE EXPRESSION OF INTEREST ARE NOT LISTED AS ACCEPTABLE TENDERERS:*
 - A. *ANAECO LIMITED; AND*
 - B. *THIESS SERVICES PTY LTD.*
3. *THE RESPONDENTS TO EXPRESSION OF INTEREST 2009-10 BE ADVISED OF THE OUTCOME OF THE ASSESSMENT.*
4. *THE ATTACHMENT REMAINS CONFIDENTIAL AND BE CERTIFIED BY THE ACTING CHIEF EXECUTIVE OFFICER AND THE EMRC CHAIRMAN.*
5. *THE TENDER EVALUATION COMMITTEE BE ACKNOWLEDGED FOR THE SIGNIFICANT EFFORT PUT INTO EVALUATING THE EOI SUBMISSIONS."*

On 24 September 2009, Council resolved that (Ref: Committees-9922):

- "1. *THE FOLLOWING PRELIMINARY RECOMMENDATIONS OF THE RESOURCE RECOVERY COMMITTEE FORM THE BASIS OF CONSULTATION BETWEEN THE EMRC AND THE MEMBER COUNCILS AND THE COMMUNITY WITH THE INTENTION OF REPORTING BACK TO COUNCIL IN APPROXIMATELY MARCH 2010 WITH A FINAL RECOMMENDATION;*
 - A) *RED HILL WASTE MANAGEMENT FACILITY IS THE PREFERRED SITE FOR THE RRF BASED ON ENVIRONMENTAL, ECONOMIC AND PLANNING CONSIDERATIONS, COMMUNITY RESEARCH AND THE POTENTIAL VALUE OF THE EMRC HAZELMERE SITE AS A RESOURCE RECOVERY PARK.*
 - B) *THE DESIGN & CONSTRUCT CONTRACT OWNERSHIP MODEL IS PREFERRED TO A BUILD OWN OPERATE CONTRACT MODEL.*
 - C) *THE RRF TECHNOLOGY OPTIONS INCLUDING ANAEROBIC DIGESTION, GASIFICATION AND PYROLYSIS ARE RANKED HIGHER THAN COMBUSTION AND PLASMA AT THIS STAGE BUT MORE INFORMATION IS REQUIRED BEFORE A FINAL PREFERENCE CAN BE DETERMINED.*
 - D) *A THIRD BIN FOR HOUSEHOLD ORGANIC WASTE COLLECTION IS CONSIDERED IN CONJUNCTION WITH ANAEROBIC DIGESTION TECHNOLOGY."*

Further, on 3 December 2009, Council resolved that (Ref: Committees-10346):

- "1. *COUNCIL APPROVE A VISIT TO EASTERN STATES AND OVERSEAS RESOURCE RECOVERY REFERENCE FACILITIES TO BE UNDERTAKEN BY THE CHAIRMAN, RESOURCE RECOVERY COMMITTEE, MR JOHN KING, PROJECT DIRECTOR FOR CARDNO LIMITED AND THE MANAGER PROJECT DEVELOPMENT.*
2. *INFORMATION GAINED FROM THE VISIT BE REPORTED TO THE RRC AND COUNCIL IN EARLY 2010 AS PART OF THE FINAL RECOMMENDATION ON THE PREFERRED RESOURCE RECOVERY FACILITY OPTIONS."*

On 22 April 2010, Council resolved in relation to the reference facility visits that (Ref: Committees-10780):

- "1. *THE REPORT BE RECEIVED.*
2. *INFORMATION GAINED FROM THE RESOURCE RECOVERY FACILITY VISITS BE APPLIED TO THE ANALYSIS OF THE PROJECT OPTIONS ON TECHNOLOGY, CONTRACT MODEL AND BIN COLLECTION SYSTEM.*
3. *THAT THE ATTACHMENT TO THIS REPORT REMAIN CONFIDENTIAL AND BE CERTIFIED BY THE CHIEF EXECUTIVE OFFICER AND CHAIRMAN."*



Item 9.1 continued

On 20 May 2010, Council resolved that (Ref: Committees-10810):

- "1. THE FOLLOWING OPTIONS ARE CONFIRMED AS THE PREFERRED OPTIONS FOR THE RESOURCE RECOVERY FACILITY:
 - A) RED HILL WASTE MANAGEMENT FACILITY IS THE PREFERRED SITE FOR THE RRF.
 - B) THE DESIGN & CONSTRUCT CONTRACT OWNERSHIP MODEL IS PREFERRED TO A BUILD OWN OPERATE CONTRACT MODEL AT THIS STAGE OF THE PROJECT.
 - C) THE RRF TECHNOLOGY OPTIONS INCLUDE ANAEROBIC DIGESTION, GASIFICATION, PYROLYSIS AND COMBUSTION. PLASMA TECHNOLOGY WILL ONLY BE CONSIDERED IF IT IS AN INTEGRAL PART OF ONE OF THESE TECHNOLOGIES.
 - D) A THIRD BIN FOR HOUSEHOLD ORGANIC WASTE COLLECTION BE CONSIDERED IN CONJUNCTION WITH ANAEROBIC DIGESTION TECHNOLOGY, OTHERWISE A TWO BIN SYSTEM IS RECOMMENDED FOR THE THERMAL TECHNOLOGY OPTIONS.
2. COUNCIL PROCEEDS WITH THE ENVIRONMENTAL AND PLANNING APPROVALS TASK FOR THE RESOURCE RECOVERY PROJECT BASED ON THE PREFERRED SITE AND TECHNOLOGY OPTIONS."

On 21 October 2010, Council resolved to amend the Resource Recovery budget to allow for the predicted cost of baseline environmental monitoring and additional consultant costs as follows (Ref: Committees-11544):

"THAT THE BUDGET FOR SEEK ENVIRONMENTAL APPROVALS (TASK 15) IN THE ANNUAL BUDGET UNDER RESOURCE RECOVERY BE INCREASED FROM \$220,000 TO \$525,000 AND THAT THIS INCREASE BE FUNDED FROM THE SECONDARY WASTE RESERVE."

On 23 June 2011, Council resolved that (Ref: Committees-12150):

- "1. COUNCIL NOTES THE ADVICE FROM SITA ENVIRONMENTAL SOLUTIONS AND WSN ENVIRONMENTAL SOLUTIONS OF THEIR INTENTION TO WITHDRAW FROM THE TENDER PROCESS FOR THE EMRC RESOURCE RECOVERY FACILITY.
2. THE LIST OF ACCEPTABLE TENDERERS BE AMENDED TO REMOVE SITA ENVIRONMENTAL SOLUTIONS AND WSN ENVIRONMENTAL SOLUTIONS.
3. SITA ENVIRONMENTAL SOLUTIONS BE ADVISED OF COUNCIL'S ACKNOWLEDGEMENT OF BOTH SITA ENVIRONMENTAL SOLUTIONS AND WSN ENVIRONMENTAL SOLUTION'S WITHDRAWAL FROM THE EMRC RESOURCE RECOVERY FACILITY TENDER PROCESS.
4. THE REPORT AND ATTACHMENTS REMAIN CONFIDENTIAL AND BE CERTIFIED BY THE CHAIRMAN AND THE CHIEF EXECUTIVE OFFICER."

On 18 August 2011, Council resolved (Ref: Committees-12849):

"THAT COUNCIL CONFIRMS THE TECHNOLOGY OPTIONS FOR THE RESOURCE RECOVERY FACILITY AT RED HILL WASTE MANAGEMENT FACILITY AS ANAEROBIC DIGESTION AND GASIFICATION."

At the 3 November 2011 meeting of Council, a clarification of gasification technology was provided and what this class of thermal waste treatment technology includes (Ref: Committees-13114).

By way of explanation, the three contract ownership models being considered for the RRF are as follows:

Build Own Operate

Under a Build Own Operate (BOO) contract delivery model, the Contractor will be required to build, finance, own and operate the facility for a fixed period of time (the economical life of the facility and anticipated to be for 20 years). Under this contract model, some of the project risks, and in particular, the risks associated with the design, construction and performance of the RRF, are transferred to the Contractor.



Item 9.1 continued

Design and Construct

Under a Design and Construct (D&C) contract delivery model, the Contractor will design and construct a facility that conforms to agreed standards and performance requirements. If the D&C model was adopted by the EMRC, the Contractor will also be required to operate the facility for a minimum of 12 months and up to two years after the completion of wet commissioning. Under this contract model, the operational and ownership risks would be assumed by the EMRC, particularly following transfer of operational responsibilities to the EMRC and expiry of warranties and defects liability periods. The EMRC may operate the facility using its own staff or enter into a separate contract for the operation of the facility under this D&C contract delivery model.

Design, Build Operate and Maintain

Under a Design, Build Operate and Maintain (DBOM) contract delivery model, ownership of the RRF is with the EMRC but operation and maintenance is with the Operator. The EMRC will contract with the main contractor, who is most likely to be an Operator or technology provider who will be responsible for subcontracting and managing the risk of a builder for the construction phase. The EMRC will be required to obtain its own funding for the RRF and will have to fund construction payments during the construction phase and service payments during the operation phase, usually by way of regular monthly payments linked to the amount of waste processed by the RRF.

As with the BOO, the Operator's involvement in the RRF continues until the expiry of the operation term. However, unlike the BOO, the operating period under a DBOM can be less than under a BOO as it does not have to match the duration of the debt repayments. This is because the debt repayments are made by the EMRC direct to its financier, rather than by the Operator to its financier.

Under this contract model, the project risks associated with the design, construction and performance of the RRF, are transferred to the Contractor whereas the ownership risk resides with the EMRC.

Acceptable Tenderers and Technologies

Acceptable Tenderers as at 1 September 2011	Technology Offered at EOI Stage
Energos AS	Gasification
Evergreen Energy Corporation Pty Ltd	Anaerobic Digestion
Amec (formerly Amec Minproc Limited)	Anaerobic Digestion and Combustion
Phoenix Energy	Combustion
Transpacific Cleanaway Limited	Anaerobic Digestion

REPORT

Public Environmental Review (PER) Development

A meeting was held with the DEC Air Quality Branch in June following the completion of the updated air quality modelling using Red Hill meteorological data, sensitivity analysis on the odour modelling and analysis of the odour ground truthing results. The updated air quality modelling showed that the emissions from either technology option complied with air quality standards. The updated PER was resubmitted to the OEPA on 15 June 2012 and approved for public review on 11 July 2012 (refer Attachment 1).

The PER includes a compact disc (CD) which has the electronic version of the PER plus several background documents cited in the PER including the Environmental Scoping Document, full reports on air quality modelling, odour modelling, noise modelling, flora and fauna studies and waste characterisation studies.

Two hundred (200) copies of the PER have been printed with one hundred and twenty nine (129) copies provided to the distribution list comprising EPA members, government departments, libraries, interest groups and member Councils. The printed PER (including a CD) can be purchased from the EMRC's Ascot Place office or the Red Hill Administration office for \$10. CD copies are provided free of charge.



Item 9.1 continued

An updated schedule for the PER environmental approval is as follows:

Details	Commencement	Completion	Target Timeframe
Submit draft PER to EPA	14 November 2011	19 December 2011	Milestone
Review by EPA	19 December 2011	3 February 2012	7 weeks
Revise PER & resubmit to OEPA	3 February 2012	10 April 2012	9 weeks
OEPA approval to Release	10 April 2012	11 July 2012	2 Weeks
Printing of PER, advertising	24 April 2012	4 May 2012	2 weeks
Public Review	23 July 2012	17 September 2012	8 weeks
EPA provide summary of submissions	18 September 2012	21 September 2012	1 weeks
Proponent Response	24 September 2012	22 October 2012	4 weeks
EPA Assessment	22 October 2012	13 December 2012	7 weeks
Preparation and finalisation of EPA report	13 December 2012	28 January 2013	5 weeks
Appeals Period	28 January 2013	8 February 2013	2 weeks
Minister Consideration	11 February 2013	11 May 2013	3 Months

Community Engagement

Community information sessions have been organised and advertised for Gidgegannup and Mundaring. The Gidgegannup session will be held on Monday 13 August 2012 from 6:00pm to 8:00pm in the Gidgegannup Agricultural Hall with the Mundaring session on Wednesday 15 August 2012, 6:00pm to 8:00pm in the Shire of Mundaring Civic Centre. These two dates have been organised close together because the sessions will involve the consultants who prepared the various sections of the PER to present a summary of the results and answer questions.

An EMRC newsletter detailing the PER and the submission process has been produced for distribution in the region and is attached for reference (Attachment 2).

Other initiatives have been to update the EMRC website with the latest information on the PER and this includes a link to a pdf version of the PER and a new Frequently Asked Questions (FAQ) section with a search function and an electronic version of the PER with the ability to search and print selected sections of the PER, plus an information sheet on how to make a submission.

The public review of the PER was advertised in the West Australian newspaper and the regional community newspapers as required by the EPA (Attachment 3). In addition, a Resource Recovery Update advert will run in community newspapers, the community contact database have been emailed with details of the PER and information posters have been placed in the libraries where the PER is on display.

A newsletter drop was also undertaken in the Gidgegannup/Red Hill area to inform residents of the PER release.

Other Project Activities

Consultants Parsons Brinkerhoff have completed a preliminary geotechnical assessment of Lots 8, 9 and 10 and Cardno are completing an assessment on the feasibility of using Lot 8 as an alternative location for the RRF in the event the rezoning application is successful.

STRATEGIC/POLICY IMPLICATIONS

Key Result Area 1 – Environmental Sustainability

- 1.3 To provide resource recovery and recycling solutions in partnership with member Councils



Item 9.1 continued

FINANCIAL IMPLICATIONS

All costs covered within this report are accounted for in the annual budget approved by Council. Cardno have been advised they have expended their approved budget for the environmental approvals for the project (Task 15) and a response is pending.

SUSTAINABILITY IMPLICATIONS

The Resource Recovery Facility and/or Resource Recovery Park will contribute toward minimising the environmental impact of waste by facilitating the sustainable use and development of resources.

MEMBER COUNCIL IMPLICATIONS

Member Council	Implication Details
Town of Bassendean	} Nil
City of Bayswater	
City of Belmont	
Shire of Kalamunda	
Shire of Mundaring	
City of Swan	

ATTACHMENT(S)

1. EPA Release Letter (Ref: Committees-14497)
2. EMRC Newsletter (Ref: Committees-14496)
3. Advert-West Australian Newspaper, 23 July 2012 (Ref: Committees-14498)

VOTING REQUIREMENT

Simple Majority

RECOMMENDATION(S)

That the report be received.

Discussion ensued

The Manager Project Development provided a brief update on the Resource Recovery Project and a discussion ensued.

RRC RECOMMENDATION(S)

MOVED CR GODFREY SECONDED CR LINDSEY

That the report be received.

CARRIED UNANIMOUSLY



Environmental Protection Authority

The Atrium,
Level 8, 168 St Georges Terrace,
Perth, Western Australia 6000.
Telephone: (08) 6467 5000.
Facsimile: (08) 6467 5557.

Postal Address: Locked Bag 33,
Cloisters Square, Perth, Western Australia 6850.
Website: www.epa.wa.gov.au

Your Ref: EMRC-147612
Our Ref: OEPA2010/000265
Enquiries: Ann Stubbs (6467 5409)
ann.stubbs@epa.wa.gov.au

Mr Steve Fitzpatrick
Manager Project Development
Eastern Metropolitan Regional Council
PO Box 234
BELMONT WA 6984

Dear Mr Fitzpatrick

PROPOSAL NAME: EMRC Resource Recovery Facility – Red Hill
ASSESSMENT NO: 1844
LEVEL OF ASSESSMENT: Public Environmental Review (8 Weeks)

The Office of the EPA has provided comments and advice on a previous draft of your Public Environmental Review (PER). You are advised that the revised draft (Version Revision 4.1) provided to the EPA on 6 July 2012 is now approved for release for public review.

The public review period for this proposal will start on 23 July 2012 and end on 17 September 2012. The advertised cost of a hard copy of the document should be \$10.00 (including postage). If you have produced a CD version of the document for distribution, it should be made available free of charge to encourage use of the electronic format.

The Office of the EPA has also reviewed your advertising arrangements and considers that they are acceptable. Please ensure that sufficient copies of the document are available on the specified dates or the submissions period will need to be extended to reflect the delays.

The Office of the EPA will require eleven (11) hard copies and fifteen (15) CDs (in total) of the PER for its own use and distribution. Please ensure that these copies are available prior to the commencement of the public review period.

The Office of the EPA expects you to provide free copies of the PER to the individuals and organisations nominated in the attached distribution list. The PER should be available for download from the proponent's website. The EPA website will advertise the link to the proponent's website.

This advice does not in any way imply that your proposal has been assessed to be environmentally acceptable, nor that all the issues have been exhaustively covered. It is anticipated that submissions arising from the review period will assist in providing a more complete analysis of the environmental significance of the proposal.

Should you have any questions regarding this matter, please contact Ann Stubbs on 6467 5409 in the first instance.

Yours sincerely

A handwritten signature in dark ink, appearing to read 'Mark Jefferies', with a stylized flourish at the end.

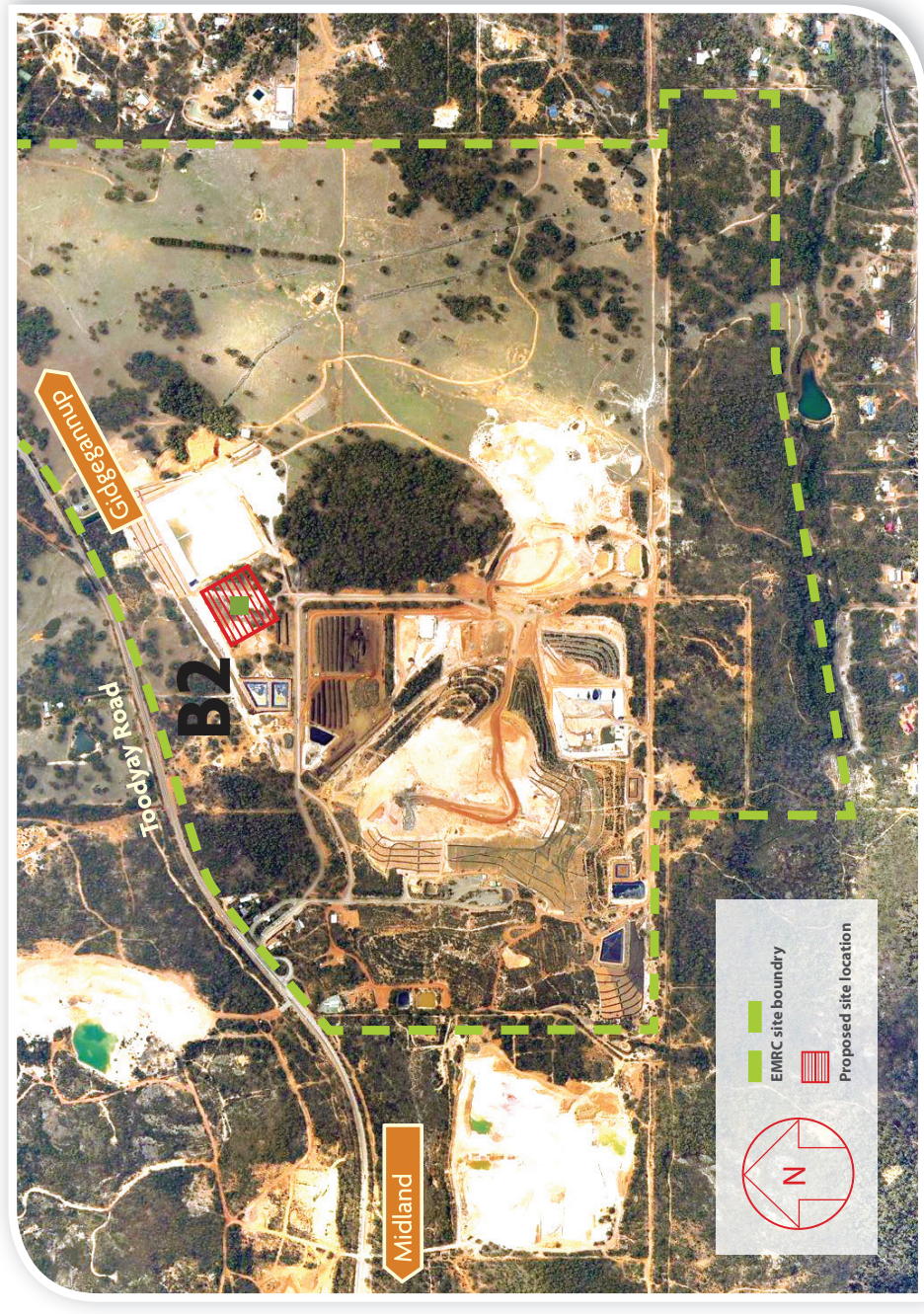
Mark Jefferies
A/Director
Assessment and Compliance Division

11 July 2012

Att: PER Distribution list.

Proposed location for the resource recovery facility

The RRF is proposed to be located within the Red Hill Waste Management Facility as seen below. The site will be on previously cleared farmland, and will require a maximum of four hectares.



Communicating with you

We want to keep you informed about what's happening with the Resource Recovery Project.

We will do this via updates on our website, in a regular column in your local newspaper, and by newsletters. If you would like to receive a printed copy of the newsletter in the future, please call us on **(08) 9424 2222**. If you would like to receive the newsletter and future updates electronically to save on paper (and waste!) we'll happily oblige. Just send an email to us at **mail@r-gang.org.au** with 'RRP update' in the subject line.

Contact: Stephen Fitzpatrick | EMRC Manager, Project Development | Ph: (08) 9424 2222 | Email: stephen.fitzpatrick@emrc.org.au



www.emrc.org.au

Resource Recovery Newsletter • Winter 2012

Reduce • Reuse • Recycle • Recover

In partnership with its six member councils, EMRC is proposing to establish a resource recovery facility (RRF) to process member council municipal solid waste within the Red Hill Waste Management Facility using either anaerobic digestion technology to produce biogas for electricity production and compost; or gasification technology to produce renewable power. The facility would be capable of diverting between 70-90% of council waste from landfill.

Have your say...

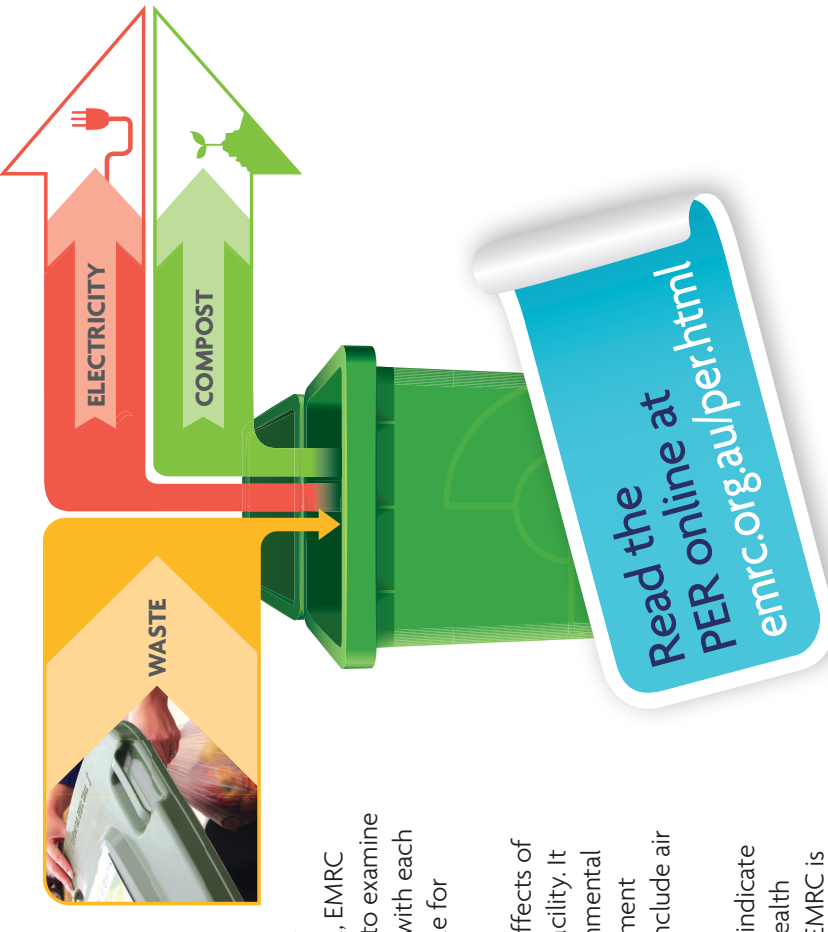
Public submissions sought for proposed resource recovery facility

As part of the Environmental Protection Authority (EPA) requirements to gain environmental approval, EMRC has prepared a Public Environmental Review (PER) to examine the environmental and health impacts associated with each technology option. This document is now available for public comment.

The PER contains an assessment of the potential effects of developing and operating the resource recovery facility. It describes the proposal, examines the likely environmental impacts and the proposed environmental management procedures. Key considerations in the document include air quality, noise, odour, traffic and human health.

"I am pleased to see that the results of the report indicate that both technologies meet environmental and health standards", said EMRC Chairman, Cr Alan Pilgrim. "EMRC is making the PER widely available for the community. I strongly encourage anyone interested in the facility to read the document," he said.

The PER is available for a public review period of eight weeks from 23 July 2012, closing on 17 September 2012. Please refer to page two of this newsletter to find out where to go to view a copy of the PER. Comments from the public will help the EPA to prepare an assessment report in which it will make recommendations to government.



Learn more! Come along to a community information session

All residents – particularly those in close proximity to Red Hill – are invited to attend a public information session to learn about the results of the PER. Project officers and environmental consultants will be available to answer your questions.

Please see inside for session details ➤

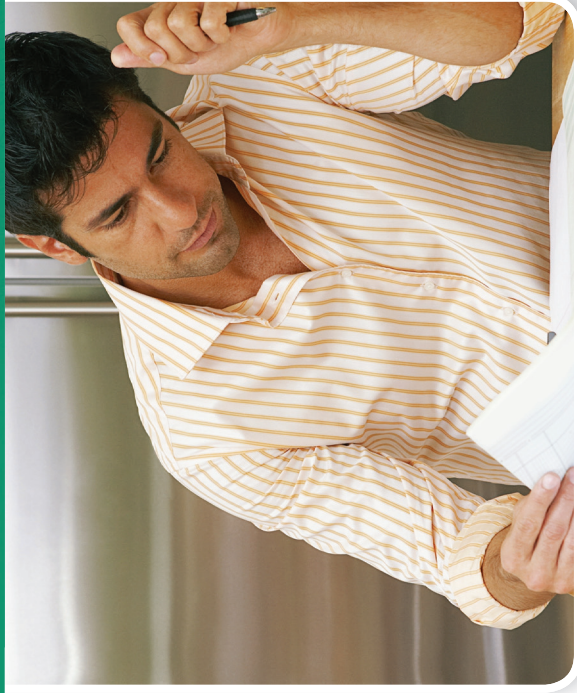
www.emrc.org.au

“Key considerations including air quality, noise, odour, traffic and human health”

Why should I read the PER?

The Public Environmental Review (PER) is an important read for any member of the community who would like to know more about the resource recovery facility or has questions about its potential health or environmental impacts.

The PER review stage is also a time in which you, or any member of the community, can express your views about the facility to the EPA by writing a submission.



Community information sessions

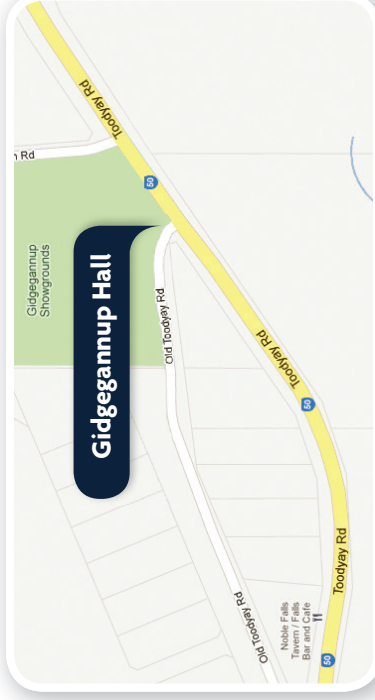
All residents are welcome to attend community information sessions which will be held to explain the results of the environmental impact assessment, and to provide information on the submission process.

Session 1: Gidgegannup

Location:
Gidgegannup Hall, Toodyay Road
(opposite Shell Service Station), Gidgegannup

When: Monday, 13 August 2012 **Time:** 6.00pm - 8.00pm

Bookings required: Please RSVP by Wednesday, 8 August 2012 by calling **(08) 9424 2222** or email resourcecovery@emrc.org.au



Session 2: Mundaring

Location:
Shire of Mundaring Civic Centre,
7000 Great Eastern Highway, Mundaring

When: Wednesday, 15 August 2012 **Time:** 6.00pm - 8.00pm

Bookings required: Please RSVP by Wednesday, 8 August 2012 by calling **(08) 9424 2222** or email resourcecovery@emrc.org.au



CONTENTS OF THE PER INCLUDE:

- Description of the resource recovery facility proposal
- Justification of the proposal and alternatives considered
- Community engagement
- Human health assessment
- Risk assessment of possible environmental impacts
- Environmental assessments of air quality, noise, odour and other priority factors



Read the
PER online at
emrc.org.au/per.html

Where can I view a copy of the PER?

The complete PER can be viewed and downloaded at www.emrc.org.au/per.html or in person at:

- **Environmental Protection Authority**

Library / Reading Room
4th Floor, The Atrium,
168 St Georges Terrace, Perth

- **J S Battye Library**

25 Francis Street, Perth Cultural Centre

- **State Library**

25 Francis Street, Perth Cultural Centre

- **Bassendean Library**

50 Old Perth Road, Bassendean

- **Morley Library**

Dewar St, Morley (opp. Woolworths, Galleria)

- **Belmont Public Library**

215 Wright Street, Cloverdale

- **Kalamunda Library**

7 Williams Street, Kalamunda

- **Midland Library**

45 Helena Street, Midland

- **Mundaring Library**

Nichol Street, Mundaring

Printed copies (CD included) of the complete PER can be purchased for \$10.00 (inc. GST / postage & handling), or free of charge in CD format only, from:

EMRC

1st Floor, Ascot Place
226 Great Eastern Highway, Belmont WA 6104
Telephone: (08) 9424 2222

Red Hill Waste Management Facility

Administration Office
1094 Toodyay Road, Red Hill WA 6056
Telephone: (08) 9574 6235

How to make a submission



The Environmental Protection Authority (EPA) invites people to make a submission on the resource recovery facility proposal. The PER is available for public review for a period of eight weeks from 23 July 2012, closing on 17 September 2012.

Comments from the public will help the EPA to prepare an assessment report in which it will make recommendations to government.

For information on preparing a submission, please download the information sheet: *How to make a submission* or see the initial pages of the PER which sets out the EPA's submission guidelines. These documents are available from the EMRC website:

www.emrc.org.au/per.html

Download the
Documents from
emrc.org.au/per.html

Resource Recovery Newsletter • Winter 2012

www.emrc.org.au

Advancing Perth's Eastern Region

Eastern Metropolitan Regional Council
Public Environmental Review

PROPOSED – EMRC RESOURCE RECOVERY FACILITY– RED HILL

ASSESSMENT NO. 1844

(Public Review Period: 23 July 2012 to 17 September 2012)

The Eastern Metropolitan Regional Council (EMRC) is proposing to build a resource recovery facility to process its member council kerbside municipal solid waste within the Red Hill Waste Management Facility.

A Public Environmental Review (PER) has been prepared by EMRC in accordance with Western Australian Government procedures, and is released for public review. The PER describes the options for waste processing, examines the likely environmental effects and the proposed environmental management procedures.

Printed copies (CD included) of the complete PER can be purchased for \$10.00 (inc. GST, postage and handling), or free of charge in CD format only, from:

EMRC

1st Floor, Ascot Place, 226 Great Eastern Highway, Belmont WA, 6104.
Telephone: (08) 9424 2222

Red Hill Waste Management Facility (Administration Office)
1094 Toodyay Road, Red Hill WA, 6056
Telephone: (08) 9574 6235

Copies of the PER may also be downloaded from www.emrc.org.au/per.html

Copies of the PER will be available for examination at:

- Environmental Protection Authority Library/Reading Room, 4th Floor, The Atrium, 168 St Georges Terrace, Perth WA 6000
- J S Battye Library
- State Library
- Local libraries: Bassendean; Belmont; Kalamunda; Midland; Morley and Mundaring.

Public submissions close on 17 September 2012.

The EPA prefers submissions to be made by email to:
submissions@epa.wa.gov.au.

Alternatively submissions can be

- posted to: Chairman, Environmental Protection Authority, Locked Bag 33, Cloisters Square WA 6850, Attention: Ann Stubbs; or
- delivered to: The Environmental Protection Authority, 4th Floor, The Atrium, 168 St Georges Terrace, Perth, Attention: Ms Ann Stubbs.

If you have any questions on how to make a submission, please ring the EPA assessment officer, Ms Ann Stubbs on (08) 6467 5409



www.emrc.org.au



9.2 HAZELMERE PYROLYSIS PROJECT UPDATE

REFERENCE: COMMITTEES-14362

PURPOSE OF REPORT

To advise Council on the progress of the investigation into the feasibility of pyrolysing wood waste at EMRC's Hazelmere site.

KEY ISSUES AND RECOMMENDATION(S)

- A memorandum of understanding (MOU) between the project partners EMRC, Ansac/Anergy and UWA's Centre for Energy which provides a framework for collaboration on the project has been finalised and signed by all parties.
- The second stage detailed engineering study, has commenced and should conclude in August 2012. Draft flow sheets and specifications have been received for review.
- A confidentiality agreement between the EMRC and Enertech has been signed to facilitate an independent review of the detailed design when it is completed.
- Discussions are being held with Hazelmere industries in relation to the potential sale of energy and biochar.
- AusIndustry held an information session on 16 July 2012 to announce details of the application process for the Clean Technology Innovation Fund with the first round of applications due in September 2012.
- The project team will prepare a grant application in late August 2012 in conjunction with a planned visit to a Chinese manufacturer of gas engines which if suitable could substantially reduce the project cost.

Recommendation(s)

That the report be received.

SOURCE OF REPORT

Manager Project Development

BACKGROUND

Previous report items to the Resource Recovery Committee have covered the EMRC's interest in the Ansac pyrolysis technology and the preparation and supply of a 30 tonne sample of refuse derived fuel (RDF) in conjunction with the City of Swan (Ref: Committees-12821). EMRC and City of Swan officers have visited the Ansac Bunbury site on several occasions, most recently in July 2011 to inspect the pilot plant and observe the processing of the RDF material.

The 8 December 2011 meeting of Council (Ref: Committees-13323) considered the proposed investigation into the feasibility of pyrolysing wood waste and other residuals at EMRC's Hazelmere site and resolved that:

1. *COUNCIL APPROVE EMRC PARTICIPATION IN A PROJECT TO ESTABLISH THE FEASIBILITY OF PYROLYSIS OF WOOD WASTE AND OTHER RESIDUALS AT HAZELMERE TIMBER RECYCLING CENTRE INVOLVING AN INITIAL FEASIBILITY STUDY FOLLOWED BY A SECOND STAGE DETAILED ENGINEERING STUDY.*
2. *THE OUTCOMES OF THE FIRST STAGE FEASIBILITY STUDY WILL BE REPORTED TO COUNCIL AND APPROVAL SOUGHT TO PROCEED WITH THE SECOND STAGE FEASIBILITY STUDY."*



Item 9.2 continued

At the 8 March 2012 meeting of the RRC, the Manager Project Development gave a presentation on the status of the initial feasibility study.

The 19 April 2012 meeting of Council resolved that (Ref: Committees-13603):

“COUNCIL, BY ABSOLUTE MAJORITY:

- 1. APPROVES EXPENDITURE OF \$80,000 FOR THE SECOND STAGE DETAILED ENGINEERING STUDY INTO A PYROLYSIS PLANT AT EMRC’S HAZELMERE SITE INVOLVING THE SPECIFICATION OF THE PLANT EQUIPMENT REQUIRED AND A BETTER COST ESTIMATE.*
- 2. APPROVES THE REALLOCATION OF \$80,000 FROM 24399/00.JH (CONSTRUCT AND COMMISSION RESOURCE RECOVERY PARK) TO 72884/00.JF (EVALUATE RESOURCE RECOVERY PARK OPTIONS) TO COVER THE COSTS OF THE SECOND STAGE DETAILED ENGINEERING STUDY.*
- 3. SUPPORTS A GRANT APPLICATION TO THE CLEAN TECHNOLOGY INNOVATION FUND IN JULY 2012, TO BE PREPARED AND SUBMITTED BY ANSAC WITH INPUT FROM EMRC AND UWA AND SEEKING PROJECT FUNDING SUPPORT FOR A DEMONSTRATION WOOD WASTE PYROLYSIS FACILITY AT HAZELMERE.”*

REPORT

Memorandum of Understanding (MOU)

A memorandum of understanding (MOU) between the project partners EMRC, Ansac/Anergy and UWA’s Centre for Energy has been finalised and signed by all parties. The MOU provides a framework for collaboration on the project and sets out the responsibilities of the parties.

Second Stage Detailed Engineering Study

The EMRC conducted a preliminary geotechnical assessment of the site at Hazelmere and have provided this to Anergy as an input to the detailed engineering study. Anergy have been working on the detailed design and have issued a draft set of flow sheets and specifications for the plant for review.

Anergy are reviewing gas engine options since there is a new, Chinese manufactured engine, which, if appropriate could substantially reduce the project cost. In order to determine the suitability of the Chinese engines for the pyrolysis project, Anergy have recommended a visit to reference sites and have nominated the week of 20 August 2012 as the most suitable time to do this because of other commitments and the opportunity to also confer and prepare the application to the Clean Technology Innovation Fund in time for the first round of submissions. The attendance of the Manager Project Development on this visit has been approved in consultation with the EMRC Chairman on the basis that if the project proceeds, the EMRC needs to be confident of the engine performance and reliability and the suppliers’ technical support for maintenance and spare parts and also to have input to the Clean Technology Innovation Fund submission.

The project group for the visit will comprise Mr Michael Martella, General Manager of Anergy UK, Professor Dongke Zhang of UWA and the Manager Project Development.

At the conclusion of the detailed engineering study, the project feasibility will be reassessed to examine the financial viability and whether to proceed further, subject to grant funding.

Clean Energy Innovation Fund

The Manager Project Development attended an AusIndustry information session on 16 July 2012 to receive details of the application process for the Clean Technology Innovation Fund. Whilst there will be a continuous assessment process for applications under this Fund, there will be cut-off dates for funding rounds, the first cut-off date being in September with AusIndustry considering those applications in late September/early October 2012.



Item 9.2 continued

Application assessments by the Clean Technology Innovation Committee will take 6 to 8 weeks with applications for more than \$3 million then being referred to the Innovation Australia Committee for a secondary assessment, again a 6 to 8 weeks process. A successful Ansac/Anergy application, on behalf of the project partners could take until mid-January to receive approval. Preparation of the draft application by the project partners is planned for late August 2012 in conjunction with the visit to China. Successful recipients of grant funding have 2 years to acquit funding.

Utilities connections

Enquiries with Alinta Gas have been proceeding regarding a connection to the high pressure gas main in Lakes Road.

Western Power have indicated that a connection to the grid for power export is possible and a formal application process will be required in due course if the project proceeds.

Market research

Discussions have been held with local industries in Hazelmere regarding possible purchase of electricity, biochar, syngas and heat from the plant. Further discussions are planned with other Hazelmere industries.

Project Timeline

A project schedule has been developed and includes Council approval stages and anticipated regulatory approval stages.

Independent review of the Anergy design

Anergy have approved Enertech to undertake the independent review of the design and a confidentiality agreement has been executed with Enertech to facilitate this process.

Community Engagement

A community engagement strategy has been drafted with input from consultant's Synnott Mulholland and is being reviewed internally.

STRATEGIC/POLICY IMPLICATIONS

Key Result Area 1 – Environmental Sustainability

- 1.1 To provide sustainable waste disposal operations
- 1.3 To provide resource recovery and recycling solutions in partnership with member Councils
- 1.4 To investigate leading edge waste management practices

FINANCIAL IMPLICATIONS

Funds are provided in the annual budget for 2012/2013 and 2013/2014 for expenditure to complete the necessary studies into the project feasibility and commence capital works if the project should proceed. The cost of the visit to China is estimated at \$3,500 and can be met from the Resource Recovery budget at 72884/02.

SUSTAINABILITY IMPLICATIONS

The Resource Recovery Project is aimed at reducing greenhouse gas emissions from the EMRC's waste disposal operations and State programmes for reduction of waste to landfill.



Item 9.2 continued

MEMBER COUNCIL IMPLICATIONS

Member Council	Implication Details
Town of Bassendean	} Nil
City of Bayswater	
City of Belmont	
Shire of Kalamunda	
Shire of Mundaring	
City of Swan	

ATTACHMENT(S)

Nil

VOTING REQUIREMENT

Simple Majority

RECOMMENDATION(S)

That the report be received.

Discussion ensued

The Manager Project Development provided an update on the Hazelmere Waste to Energy (Pyrolysis) Project and discussion ensued.

RRC RECOMMENDATION(S)

MOVED CR CARTER

SECONDED CR LINDSEY

That the report be received.

CARRIED UNANIMOUSLY



9.3 WASTE EDUCATION PROGRESS REPORT

REFERENCE: COMMITTEES-14363

PURPOSE OF REPORT

To provide an update on the progress of the EMRC regional waste education initiatives.

KEY ISSUES AND RECOMMENDATION(S)

Updates on the following items are included within this report:

- Research into attitudes, perceptions and knowledge of waste education programs.
- The Waste & Recycling Guide for 2012/2013 design and distribution.
- The dry cell battery (household) recycling program continues to expand in schools and public places.
- Progress report on the fluorescent light recycling station in public places.
- Household Hazardous Waste in the Eastern Region.
- EMRC Earth Carers training course held in July 2012.
- New Waste Education Officer – Jennifer Bennett.
- Tours of Red Hill Landfill Facility, community events and presentations.
- EMRC awarded National Mobile Muster Award for working with Schools.
- New Green Room at Ellenbrook shopping centre.

Recommendation(s)

That the report be received.

SOURCE OF REPORT

Manager Project Development
Waste Education Coordinator

BACKGROUND

The Regional Waste Education Steering Group (RWESG) was formally endorsed by member Councils and the EMRC in 2004 to guide the development and delivery of a waste education program on a regional basis.

During April and May 2005, each member Council adopted in principle support for:

- "1. A REGIONAL STRUCTURE FOR WASTE EDUCATION IN THE EMRC REGION WITH THE EMRC AS COORDINATOR AND THE MEMBER COUNCILS, THROUGH THE MEMBER COUNCIL STEERING GROUP, PROVIDING DIRECTION AND INPUT;
AND*
- 2. THE DEVELOPMENT OF A 3-YEAR, COSTED, REGIONAL WASTE EDUCATION STRATEGY TO BE REVIEWED BY THE MEMBER COUNCILS STEERING GROUP, TECHNICAL ADVISORY COMMITTEE (TAC), EMRC AND MEMBER COUNCILS."*



Item 9.3 continued

REPORT

Research into attitudes, perceptions and knowledge of waste education programs

In June 2012, Research Solutions concluded their research into regional attitudes and perceptions towards waste and recycling and knowledge of EMRC's waste education programs. Four focus groups were conducted; 300 surveys (50 from each member Council) were completed.

Overall the research findings were encouraging, with improvements from the 2007/08 benchmark in residents' (self-reported) commitment to recycling, increased awareness of the battery and fluorescent light recycling programs and of the waste and recycling guide. There was also an improvement in knowledge of keeping household hazardous waste items out of rubbish bins, which is important for landfill operations now and for a future resource recovery facility. Findings from this research will help to form a new 2 year waste education strategy for the region.

A presentation will be delivered by the Waste Education Coordinator outlining the findings from the study conducted by Research Solutions.

Waste and Recycling Guide 2012/2013

Throughout July 2012, 150,000 Waste & Recycling Guides were distributed to households in the region. Member council operational and customer service staff were consulted for information and changes. The guides were approved by the Regional Waste Education Strategy Group. WMCRG members were also asked for input.

The Waste & Recycling Guide is the major waste communications tool provided to residents. A series of advertisements were placed in community newspapers spanning the region throughout July 2012, reminding residents to look for and use the Guide and its information.

Dry-Cell (Household) Battery Recycling Program

The dry-cell battery collection program continues to expand. The Waste Education Officer has developed tools to help schools keep track of the amount of batteries they are recycling. In the past year, ten new schools have joined the program. This brings the number of primary schools participating in the program to 68, plus Swan Midland TAFE, 25 public libraries, council offices, and five major shopping centres now have battery bins in Perth's Eastern Region.

For the period January to July 2012, over nine tonnes of household (dry-cell) batteries have been collected by the EMRC. The recycling of household batteries is funded by the Waste Authority through the Household Hazardous Waste (HHW) program. Currently the transport of the collected batteries to the eastern states for recycling is in abeyance while the requirements for packaging the batteries under the Dangerous Goods Act is resolved with the competent authorities. Resolution is expected by the end of August 2012.

Advice has been received however that the company AusZinc, that undertakes the battery recycling, has indicated it will not continue with the recycling of batteries beyond 2012 and investigations into alternative arrangements are being made.

Fluorescent Light Collection and Recycling

Fluorescent light recycling stations have been manufactured and installed in 12 locations across Perth's Eastern Region, including Bunnings at Midland and Malaga, Belmont Forum, The Shops at Ellenbrook and Midland Gate Shopping Centre. The City of Swan are trialling the "Tube Terminator" a mobile trailer designed to safely crush and separate the components of fluorescent tubes ready for the material to be recycled. The "Tube Terminator" will be used as an educational tool and will be demonstrated to the public at libraries and schools in the City of Swan.

For the period January to July 2012, over 450 kilograms of fluorescent lights have been collected by the EMRC. Recycling of fluorescent lights is funded by the Waste Authority through the HHW program.

Household Hazardous Waste

Household hazardous waste drop off days are no longer funded under the HHW program funded by the Waste Authority and administered by WALGA. Red Hill Waste Management Facility has been widely promoted to residents in the eastern region as a permanent drop off location for HHW, up to 20 kilograms or 20 litres is accepted per visit.



Item 9.3 continued

Earth Carers' Training Program

In July 2012, the Waste Education team conducted its fifth Earth Carers' training course. The course was fully booked with 23 attendees from across the region participating in 5 workshops over 3 weeks. Various local guest speakers and presenters were involved and course participants partook in a number of tours.

Earth Carers will be invited to volunteer at this year's Garden Week and Royal Show events (as well as other local events) to man displays which have information on EMRC's waste education activities, programs and recycled products.

The next Earth Carers' training program will commence in July 2013.

Tours of Red Hill, Community Events and Presentations

Since January 2012, the Waste Education Officer has taken over 265 community members and students from local schools on tours of Red Hill Waste Management Facility.

The Waste Education Officer has also given presentations at Waste Wise Schools and Australian Sustainable Schools (AUSSI) events, the Whiteman Park groundwater festival and at several primary schools across the region advocating waste reduction and responsible waste management. Furthermore, the Waste Education Coordinator has been working to deliver the waste component of the Living Smart courses to each of our member Councils.

International Composting Awareness Week 2012 was held in May. The waste education team worked closely with Swan and Kalamunda to hold worm farming and composting workshops for residents. Four events will be held over the week which included a composting and worm farming workshop at Lockridge community garden, Kalamunda Town Hall and Gidgegannup Town Hall, and a tour of Red Hill Waste Management Facility with an emphasis on the green waste processing area. Over 100 residents participated in the events over the week.

The Waste Education team coordinated the EMRC's second Corporate Clean Up Australia Day in March 2012. Over 12 staff participated with 3½ sacks of recycling and 5 sacks of general rubbish collected on the day.

EMRC awarded National Mobile Muster Award for Working with Schools

On Tuesday, 19 June 2012 the EMRC Chairman accepted the National Mobile Muster Award for Working with Schools on behalf of the EMRC waste education team. The award was presented at the National General Assembly of Local Government in Canberra, by Senator Christine Milne, Leader of The Greens.

The EMRC received the award for encouraging and supporting schools in the eastern region to take on mobile phone recycling, benefiting the environment by stopping old phones from being sent to landfill. Phones and accessories collected through MobileMuster are recycled into new items such as plastic fence posts and new batteries.

In 2011/2012 the eastern region collected and recycled over 44.45 kilograms of mobile phones and accessories through the recycling program. This is the second time that the EMRC has received this award, the first was in 2009.

New Green Room at Ellenbrook Shopping Centre.

The Shops in Ellenbrook have created a recycling hub for the community by installing a room at the centre dedicated to recycling. Inside the room are a number of bins for collecting items such as cardboard and paper, aluminium and steel cans, plastic bags, ring pulls, toner and ink cartridges, household batteries and CFL globes. The Green room is a partnership between The Shops in Ellenbrook, City of Swan and EMRC.



Item 9.3 continued

STRATEGIC/POLICY IMPLICATIONS

Key Result Area 1 – Environmental Sustainability

- 1.1 To provide sustainable waste disposal operations
- 1.2 To improve regional waste management
- 1.3 To provide resource recovery and recycling solutions in partnership with member Councils

FINANCIAL IMPLICATIONS

Nil

SUSTAINABILITY IMPLICATIONS

A well coordinated waste education program with the EMRC, the member Councils and the WMCRG working together to achieve similar outcomes will be more sustainable over the long term.

MEMBER COUNCIL IMPLICATIONS

Member Council	Implication Details
Town of Bassendean	} Nil
City of Bayswater	
City of Belmont	
Shire of Kalamunda	
Shire of Mundaring	
City of Swan	

ATTACHMENT(S)

Nil

VOTING REQUIREMENT

Simple Majority

RECOMMENDATION(S)

That the report be received.

Discussion ensued

The Waste Education Coordinator provided a brief update of the Waste Education Progress Report.

A brief discussion ensued in relation to the pending closure of the AusZinc Battery recycling facility in Australia in December 2012.

Mr Purdy left the meeting at 6:00pm.

RRC RECOMMENDATION(S)

MOVED CR LINDSEY

SECONDED CR CARTER

That the report be received.

CARRIED UNANIMOUSLY



9.4 WASTE AND RECYCLE CONFERENCE 2012

REFERENCE: COMMITTEES-14499

PURPOSE OF REPORT

To advise Council of the forthcoming WA Waste and Recycle 2012 Conference to be held in Fremantle from 11-14 September 2012 at The Esplanade Hotel, Fremantle.

KEY ISSUES AND RECOMMENDATION(S)

- The W.A. Waste and Recycle Conference is to be held in Fremantle between 11-14 September 2012.
- The conference theme is "Great Expectations - Fostering an Environment for Commitment."

Recommendation(s)

That:

1. The dates of the forthcoming conference be noted.
2. Councillor(s) _____ be authorised to attend the W.A. Waste and Recycle 2012 Conference.
3. Three places be offered to the Waste Management Community Reference Group (WMCRG).

SOURCE OF REPORT

Manager Project Development

BACKGROUND

Advice has been received that the W.A. Waste and Recycle 2012 Conference is to be held between 11-14 September 2012 at The Esplanade Hotel Fremantle and that the theme of the conference is "Great Expectations - Fostering an Environment for Commitment."

Report item 9.2 of the 3 November 2011 Ordinary Meeting of Council reported on the outcomes of the 2011 Waste and Recycle Conference (Ref: Committees-13142).

REPORT

The W.A. Waste and Recycle Conference is an annual event which caters to those involved in waste management, resource recovery and recycling. In 2011, three EMRC Councillors and three WMCRG members attended the Waste & Recycle Conference.

The overall theme for 2012 is "Great Expectations - Fostering an Environment for Commitment." General Conference themes for papers are:

- Meeting and managing expectations (for a specific project/initiative/or audience);
- How to get commitment at a community, Local, State or Federal Government level (for a specific project/initiative) and the level of certainty required before commitment can be confirmed; and
- Managing difficult wastes (e.g. household hazardous waste or asbestos). What expectations should we have on the management of these materials and the involvement of community, government and industry in funding and participating in their management?



Item 9.4 continued

Papers may also be presented on:

- Waste Policies and Targets;
- Construction and Demolition waste and Commercial and Industrial waste;
- Education and Communication;
- Regulation of waste management facilities (new approaches, key issues);
- Regional and Remote waste management solutions;
- AWT Options and Residuals;
- Landfill development and monitoring;
- Product Stewardship, development and implementation;
- Illegal dumping, new approaches and initiatives;
- Innovation and Technology;
- Waste to Energy; and
- Climate Change.

The keynote speakers include Erik Conway, Historian-Californian Institute of Technology; Chris Darwin, Explorer; Robin Davidov, Independent Consultant, USA and David Griggs, Director Monash Sustainability Institute, Monash University. Details of the conference and conference papers accepted to date are attached (Attachment 1).

Registration includes access to internal exhibition displays, the opportunity to hear four internationally respected Keynote Speakers and participate in any forums, like the Waste to Energy Forum held in Como on 18 July 2012. Attendance also allows for participants to share experience and knowledge with peers on previous achievements and successes, provides access to tools and strategies to improve corporate environmental performance.

The W.A. Waste and Recycle Conference 2012 will host the Waste Authority's new Infinity Awards which provide public recognition and encouragement to individuals, business, local/regional government and State Government agencies and community organisations that demonstrate innovation and commitment to reducing waste and increasing re-use and recycling. There will also be the opportunity to expand corporate knowledge on the industry's regulatory framework as well as networking in an informal setting with others in the waste industry.

The conference programme covers a range of issues that are generally of interest to the EMRC and attendance is recommended (refer Conference Assessment Form - Attachment 2).

STRATEGIC/POLICY IMPLICATIONS

Key Result Area 1 – Environmental Sustainability:

- 1.1 To provide sustainable waste disposal operations
- 1.4 To investigate leading edge waste management practices

Two of the host organisations are WALGA and the WMAA. The EMRC supports both of these organisations by participating in their activities and by cooperating and sharing information with others.



Item 9.4 continued

FINANCIAL IMPLICATIONS

The expenditures for councillor and officer attendance at conferences are budgeted each year. Similarly, an allowance of \$4,500 is made each year in the Resource Recovery Budget for WMCRG members to attend local conferences and seminars. The cost of full registration for 2012 is expected to be approximately \$1,560 per person, to be confirmed when final details are available. Registrations can be shared amongst councillors and officers where attendees are unable to attend particular sessions.

SUSTAINABILITY IMPLICATIONS

Nil

MEMBER COUNCIL IMPLICATIONS

Member Council	Implication Details
Town of Bassendean	} Nil
City of Bayswater	
City of Belmont	
Shire of Kalamunda	
Shire of Mundaring	
City of Swan	

ATTACHMENT(S)

1. Conference Programme (Ref: Committees-14526)
2. Conference Assessment Form (Ref: Committees-14503)

VOTING REQUIREMENT

Simple Majority

RECOMMENDATION(S)

That:

1. The dates of the forthcoming conference be noted.
2. Councillor(s) _____ be authorised to attend the W.A. Waste and Recycle 2012 Conference.
3. Three places be offered to the Waste Management Community Reference Group (WMCRG).

RRC RECOMMENDATION(S)

MOVED CR FÄRDIG

SECONDED CR GODFREY

That:

1. The dates of the forthcoming conference be noted.
2. Councillor(s) _____ be authorised to attend the W.A. Waste and Recycle 2012 Conference.
3. Three places be offered to the Waste Management Community Reference Group (WMCRG).

CARRIED UNANIMOUSLY

Waste & Recycle 2012 Conference

General Conference Themes

Papers on these general themes can relate to any area of activity within the waste and recycling industry (or associated industries).

- **Meeting and managing expectations** (for a specific project/initiative/or audience).
- **How to get commitment** at a community, Local, State or Federal Government level (for a specific project/initiative) and the level of certainty required before commitment can be confirmed.
- **Managing difficult wastes** (e.g. household hazardous waste or asbestos). What expectations should we have on the management of these materials and the involvement of community, government and industry in funding and participating in their management?

Specific Conference Topics

These specific topic areas, where possible, should be related to the General Conference Themes:

- Waste Policies and Targets
- Construction and Demolition waste and Commercial and Industrial waste
- Education and Communication
- Regulation of waste management facilities (new approaches, key issues)
- Regional and Remote waste management solutions
- AWT Options and Residuals
- Landfill development and monitoring
- Product Stewardship, development and implementation
- Illegal dumping, new approaches and initiatives
- Innovation and Technology
- Waste to Energy
- Climate Change.

2012 List of Program Accepted Papers

Stream: TV & Computers

Michael McGee

Dept. Of Sustainability, Environment, Water, Population and Communities

Implementing the National Television and Computer Recycling Scheme

Three other papers awaiting final confirmation.

Stream: Organics

Mrs Rebecca Goodwin

Western Metropolitan Regional Council

The Journey to cost effective AWT

Mr Andrew Gulliver

Custom Composts

"Affordable Waste Technology for Regional Areas - Councils, Contractors and Communities

Committing to Change"

Stream: Container Deposit System

Mr Robert Verhey

LGSA NSW

Examining the "CDL will undermine kerbside" mantra. What's the real story?

Three other papers awaiting final confirmation.

Stream: New to the Industry

Ms Linda Thoresen

Office of Waste Authority

The Waste Authority, Waste Strategy and how DEC and OWA work together

Ms Wendy Aspden

Department of Environment and Conservation

Waste Wise Schools Program - Long Term Waste Minimisation Commitments in School Communities

Stream: Landfill

Ms Tess Boyes

Department of Environment and Conservation

A guide to exemptions from the Landfill Levy

One other paper awaiting final confirmation.

Stream: Clean Energy

Ms Karen Barlow (Interim Presenter)

WALGA

Local Government - Committee to addressing Climate Change

Michael Voros (Interim Speaker)

Free Hills

Carbon Expectation: How is the Carbon Price going?

Stream: Education

Ms Katherine Gaschk

Murdoch University

Exploring the barriers and motivators to correct waste separation behaviour for a sample of residents within five member councils of the Southern Metropolitan Regional Council

Ms Amy Lovesey

Local Government and Shires Associations of NSW

“Asbestos risks could be better managed if only our Council had...”

Industry Commitment

Mr David Markham

Capital Recycling representing the WMAA WA C&D Working Group

Sustainable Aggregates & Sand from recycling C&D waste

Mr John Jackson

WA WMAA

WMAA - Fostering Industry Commitment and Development

Stream: Landfill Products and Services

Mr Stuart Knight

Accuweigh Pty Ltd

Weigh Wash and Data Capture Solutions

Mr Adam Johnson

Western Metropolitan Regional Council

Great Expectations – What the Dickens is happening in WA waste management?

Stream: Rural & Remote

Mr Robert Bibby

Compas Group (Aust) Pty Ltd

Establishing a Comprehensive Waste Recycling Program at Remote Villages in Western Australia

Mr Kenn Donohow

CEO of Broome

Community engagement around the transfer of municipal services from Federal Government to

Local Government and managing the community's expectations

Stream: University Perceptions

Miss Belinda O'Brien

Edith Cowan University

Fostering Commitment + Waste Management = innovation @ ECU

Ms Caroline Minton

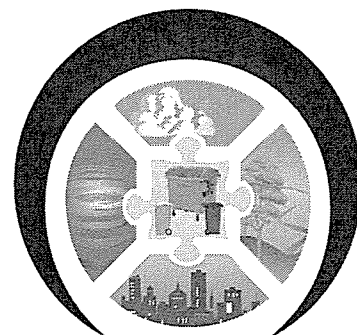
Murdoch University

Barriers, Challenges and Approaches to Continuous Improvement in Waste Management at a Large Institution

Great Expectations

Fostering an environment for **commitment**

11-14 September 2012 • Esplanade Hotel • Fremantle • Western Australia



**WASTE & RECYCLE
2012 CONFERENCE**

Registration Form

**Early-bird Registrations close
Friday 17 August 2012**

from this date onwards the Full
Registration rates will apply.

Conference Secretariat:

Waste & Recycle Conference 2012.
c/- Keynote Conferences

PO Box 1126

West Leederville WA 6901

Tel: +61 8 9382 3799

Fax: +61 8 9380 4006

Email: reception@keynotewa.com

General information

This form will allow you to select from a variety of registration types which cover different events planned for Tuesday 11 to Friday 14 September. Please direct any queries to the Conference Secretariat: Keynote Conferences, on 08 9382 3799 or email us at reception@keynotewa.com

Please ensure that your information is correct before submitting your form.

Navigating the online form

It is highly recommended that you use the 'Tab' key to navigate from one field to the next. A submit button is at the end of the form. For users of the online form, a submit button is also located at the top right corner.

Changes

You can change or add to your submission at any time before submitting the form. Once you submit your application, you will be prompted for your name and email address. It will be to this address that all Conference information will be sent.

- Your name badge will be reproduced exactly as typed and is case-sensitive. Please ensure that it is represented correctly (e.g. Cr John Smith).
- Title refers to Mr, Prof, Dr, and so on.
- Position refers to Managing Director etc.

Confirmation

If using the online system, you will see a confirmation message that the form has

been sent. You will receive an email within 48 hours confirming your registration. Within two weeks you will receive your final confirmation, including a Tax Invoice.

Registration prices

The Registration prices are specific to registrations received and paid within the specified dates. Failure to pay before these dates will result in the registration cost increasing to the Option B cost bracket where applicable.

Prices are in Australian Dollars (AUD) and include GST. A credit card fee of 3.5% applies.

Carbon Neutral Registration

The Waste & Recycle 2012 Conference is once again working toward being a carbon neutral event. The Conference will purchase Greenhouse Friendly approved carbon offsets to counter the carbon emissions produced by the event this year, as well as taking measures to reduce its environmental impact.

We encourage those attending to contribute by offsetting the carbon emissions generated by their attendance. All monies from this option will go directly to offsetting emissions.

All registrants that participate will be recognised as a carbon neutral delegate on their name badge. Organisations will be recognised via a list in both the proceedings and the program.

Tours and workshops

All tours will depart from the Esplanade Hotel at their specified times.

Gold Sponsor



Waste Authority



Western Australia.
Too good to waste.
www.wa.gov.au

Host Organisations



Department of
Environment and Conservation
Our environment, our future

WMAA
Waste Management Association of Australia



WALGA

www.wasteandrecycle.com.au



Waste & Recycle 2012 Conference Registration Form

11-14 September 2012

The Convention Centre, The Esplanade Hotel, Fremantle, Western Australia

All prices are in Australian dollars (AUD) and include 10% GST. Please use the Tab key to move between fields.

Official use only

DELEGATE INFORMATION PLEASE PRINT CLEARLY

Surname: Title: First Name:

Name for Badge:

Organisation: Position:

Postal Address:

Suburb: State: Postcode: Country:

Tel: (.....) Fax: (.....) Mobile:

Email:

Please tick box if you are a presenter at the Conference ☐

SPECIAL DIETARY AND ACCESS REQUIREMENTS

Please advise of any special dietary requirements:

- ☐ no special dietary requirement ☐ vegetarian ☐ vegan ☐ no seafood ☐ allergic to nuts ☐ gluten intolerant
☐ lactose intolerant ☐ wheat intolerant

Special access requirements:

MEMBERSHIP / ASSOCIATION

Please indicate below which of the organisations you are affiliated with (you may choose more than one):

- ☐ Department of Environment and Conservation (DEC) ☐ Waste Management Association of Australia (WMAA)
☐ Western Australian Local Government Association (WALGA) ☐ None of the above.

Please indicate which sectors best describe your work environment:

- ☐ Federal Govt. ☐ State Govt. ☐ Local Govt. ☐ Industry ☐ Private Business ☐ College/University

HOW DID YOU HEAR ABOUT THE CONFERENCE?

- ☐ Direct mail ☐ Waste Management Association of Australia Distribution
☐ Direct email ☐ Conference website
☐ Department of Environment and Conservation Distribution ☐ Word of mouth
☐ Western Australian Local Government Association Distribution

CONFERENCE REGISTRATION

Please check the box(s) for the registration type(s) you require.

- | | | ENTER YOUR
OPTION COSTS |
|---|-----------|----------------------------|
| <input type="checkbox"/> OPTION 1: Access to one Tuesday full-day Regional Tour. | \$286.00 | \$ |
| <input type="checkbox"/> OPTION 2: Access to one Wednesday half-day Tour or Workshop. | \$165.00 | \$ |
| <input type="checkbox"/> OPTION 3: Access to the Wednesday full-day (Waste 101) Tour/Workshop OR both half-day events (Data & MRF-AWT). | \$286.00 | \$ |
| <input type="checkbox"/> OPTION 4: Day Registration for Thursday Conference sessions. Excludes Waste Authority Breakfast and Functions. | \$625.00 | \$ |
| <input type="checkbox"/> OPTION 5: Waste Authority Breakfast on Thursday. | \$75.00 | \$ |
| <input type="checkbox"/> OPTION 6: Day Registration for Friday Conference sessions. Excludes Functions. | \$625.00 | \$ |
| <input type="checkbox"/> OPTION 7A: Available on or before 17 August 2012. Access to all sessions on Thursday and Friday, Trade Exhibition, the Poolside Cocktail and the Conference Dinner. Plus a Conference Satchel and Conference Proceedings. Excludes Waste Authority Breakfast. | \$1210.00 | \$ |
| <input type="checkbox"/> OPTION 7B: Applicable after 17 August 2012. Access to all sessions on Thursday and Friday, Trade Exhibition, the Poolside Cocktail and the Conference Dinner. Plus a Conference Satchel and Conference Proceedings. Excludes Waste Authority Breakfast. | \$1430.00 | \$ |

PAYMENT A: \$ \$0.00.

Tips for interactive forms: A purple message bar indicates the presence of fillable fields. To make form fields easier to identify, click the Highlight Fields button.

continued over...

CARBON NEUTRAL

- ☐ I would like to contribute to offsetting the carbon emissions generated by my attendance at the Conference at \$27.50 incl. GST.
- ☐ I do not wish to participate.

PAYMENT B: \$

PRE-CONFERENCE REGIONAL AND REMOTE TOURS (OPTION 1):

TUESDAY 11 SEPTEMBER

- ☐ I am not attending on Tuesday.

SHOULD YOU SELECT FROM THE BELOW AND IT NOT BE INCLUDED IN YOUR REGISTRATION TYPE, THE CONFERENCE SECRETARIAT WILL AMEND YOUR REGISTRATION TYPE ACCORDINGLY. THIS MAY CAUSE ADDITIONAL CHARGES TO BE ADDED TO YOUR ORIGINAL REGISTRATION SELECTION.

- | | | | |
|---|-------------|-----------------|---------------------------|
| <input type="checkbox"/> Rottnest Island | (\$286 pp) | 8.30 am–5.30 pm | Full-day Tour |
| <input type="checkbox"/> Alternative Landfills | (\$286 pp) | 8.30 am–5.30 pm | Full-day Tour |
| <input type="checkbox"/> Construction & demolition waste into roads | (\$286 pp) | 8.30 am–5.30 pm | Full-day Tour |
| <input type="checkbox"/> South West cheese, chocs, wine & waste | (\$286 pp*) | 8.30 am–5.30 pm | Full-day (overnight) Tour |

*Please note: accommodation, dinner and breakfast costs are not included in this price.

PRE-CONFERENCE LOCAL TOURS AND WORKSHOPS (OPTIONS 2 OR 3):

WEDNESDAY 12 SEPTEMBER

- ☐ I am not attending on Wednesday.

SHOULD YOU SELECT FROM THE BELOW AND IT NOT BE INCLUDED IN YOUR REGISTRATION TYPE, THE CONFERENCE SECRETARIAT WILL AMEND YOUR REGISTRATION TYPE ACCORDINGLY. THIS MAY CAUSE ADDITIONAL CHARGES TO BE ADDED TO YOUR ORIGINAL REGISTRATION SELECTION.

- | | | | |
|---|------------|------------------|------------------------------------|
| <input type="checkbox"/> Waste 101 | (\$286 pp) | 8.30 am–5.30 pm | Full-day Workshop (am) & Tour (pm) |
| <input type="checkbox"/> Data Collection & Management for Local Govt | (\$165 pp) | 8.30 am–12.30 pm | Morning Half-day (onsite) Workshop |
| <input type="checkbox"/> Material Recovery Facility & Alternative Waste Treatment | (\$165 pp) | 8.30 am–12.30 pm | Afternoon Half-day Tour |

SOCIAL PROGRAM

WEDNESDAY OFFSITE INFORMAL EVENING (This function is in addition to ALL registrations)

TIME: 5.30PM – 7.00PM • VENUE: DEPARTING FROM THE ESPLANADE HOTEL LOBBY FOR LITTLE CREATURES

- ☐ I do not wish to attend.
- ☐ I will be attending the Wednesday Informal Evening 1 x \$50.00 incl. GST. \$
- ☐ I would like to purchase ☐ additional ticket(s) for the Wednesday Informal Evening x \$50.00 incl. GST each. \$\$0.00

THURSDAY POOLSIDE COCKTAIL FUNCTION (One ticket is included in Registration Options 4 and 7A/7B only)

TIME: 5.30PM – 7.30PM • VENUE: THE ESPLANADE HOTEL, RESORT POOL DECKING

- ☐ I do not wish to attend.
- ☐ I will be attending the Thursday Poolside Cocktails.
- ☐ I would like to purchase ☐ additional ticket(s) for the Thursday Poolside Cocktails x \$90.00 incl. GST each. \$\$0.00

SPECIAL DISCOUNT RATE

- ☐ I would like to purchase ☐ sets of five (5) additional tickets for the Thursday Poolside Cocktails x \$360.00 incl. GST. \$\$0.00

FRIDAY 'MONSTER MASH' CONFERENCE DINNER (One ticket is included in Registration Options 7A and 7B only)

TIME: 7.15PM – LATE • THE ESPLANADE HOTEL, ORION/PLEIADES ROOM

- ☐ I do not wish to attend.
- ☐ I will be attending the Friday Conference Dinner.
- ☐ I would like to purchase ☐ additional ticket(s) for the Friday Conference Dinner x \$125.00 incl. GST each. \$\$0.00

PAYMENT C: \$\$0.00

PAYMENT SUMMARY

PAYMENT A: Conference Registration \$\$0.00

PAYMENT B: Carbon Neutral \$

PAYMENT C: Social Program \$\$0.00

Cheque or Invoice Total: \$\$0.00

Note: A merchant fee of 3.5% applies to all credit card payments.

DISCLAIMER: The information contained within this is correct at the time of publication. Keynote Conferences, the Conference Steering Committee and the Host Organisations reserve the right to alter or delete items from this document and the conference. None of the above mentioned parties will be held liable for any cost or damage arising from any action based on the information contained herein.

continued over ...

PAYMENT METHOD PLEASE CHOOSE A PAYMENTS OPTION:

☐ **Payment by Cheque:**

Cheques should be drawn in Australian Dollars and made payable to "Waste & Recycle 2012 Conference" then mailed to:
Waste & Recycle 2012 Conference c/- Keynote Conferences
PO Box 1126
West Leederville WA 6901
Tel: (08) 9382 3799 Fax: (08) 9380 4006 Email: reception@keynotewa.com

☐ **To be Invoiced:**

PAYMENT MUST BE RECEIVED NO LATER THAN 14 DAYS FROM THE RECEIPT OF YOUR TAX INVOICE.
THE INVOICE WILL BE FORWARDED TO THE CONTACT DETAILS CONTAINED IN THIS REGISTRATION.

☐ **Payment by Credit Card – MasterCard, Visa, or American Express Only:**

Please complete online or mail to the above address or fax this Registration Form to Keynote Conferences on (08) 9380 4006. **Note: A merchant fee of 3.5% applies to all credit card payments.**

I hereby authorise for the payment of the above indicated items including GST for the delegate indicated overleaf to be deducted from my credit card.

Please charge my: ☐ MasterCard ☐ Visa ☐ American Express

Card No:

Expiry Date: Card Holder Name:

ACCOMMODATION PLEASE INDICATE IF YOU REQUIRE ACCOMMODATION – ALL PRICES ARE ON A PER ROOM, PER NIGHT BASIS AND DO NOT INCLUDE BREAKFAST:

☐ I do not require accommodation.

THE ESPLANADE HOTEL (The Conference Venue) a 4½ star hotel

Conference Rate Availability: Check In Date: 9 September, Check Out Date: 16 September

☐ Single Standard Room: \$229.00 ☐ Twin Standard Room: \$229.00 ☐ Double Standard Room: \$229.00

BOOKING DETAILS:

Check In Date: Check Out Date: Estimated Time of Arrival:

Unless otherwise specified, the check-in times for all rooms is 2.00–3.00pm and the departure times are 10.00–11.00am.

Earlier arrival or later departure times may incur an additional night's charge.

I have made arrangements to share with:

Please note: Accommodation bookings and preferences are on a first come, first served basis. The Conference Secretariat will do their utmost to meet your requests.

A credit card number is required with all requests for accommodation to secure your booking. The card will not be processed by the Conference or associated Conference Secretariat but be passed on to the relevant hotel who will hold the credit card details and process them once you have arrived. Alternatively, the card will be processed should the accommodation room be cancelled within one month of the event.

Any outstanding monies owing to your accommodation stay must be settled between yourself and the hotel upon your departure.

Please supply your Credit Card details to secure your accommodation booking:

Please charge my: ☐ MasterCard ☐ Visa ☐ American Express

Card No:

Expiry Date: / Card Holder Name:

PRIVACY DETAILS

Privacy Act Disclaimer: The attached registration information will be used to update the Waste and Recycle 2012 Conference.

Should you wish your details to be withheld from other parties directly involved and related to the event including other delegates in the form of: a delegate list, event and accommodation venues, speakers, sponsors and exhibitors, please indicate here.

☐ I do not require privacy.

☐ I do require privacy.

CANCELLATION POLICY/TERMS & CONDITIONS: Cancellation of registration must be made in writing and forwarded to the Conference Secretariat. Cancellation Policy for Waste & Recycle Conference 2012 is as follows:

- Cancellations received in writing before 31 July will incur a fee of \$150.
- Cancellations received in writing before 24 August will incur a fee of \$300.
- Cancellations received in writing after 24 August will incur a fee equal to the cost of the registration and social functions selected.
- All refunds will be paid after the conclusion of the Conference.

As an alternative to cancelling, a registration can be changed into another name up to two weeks prior to the event. If this is suitable please contact the Conference Secretariat. Unless otherwise notified as per the Cancellation Policy, non-attendance by the delegates will still require full payment of all Conference fees.

Submit Registration

Clear Form



EASTERN METROPOLITAN REGIONAL COUNCIL

CONFERENCE ASSESSMENT FORM

CONFERENCE DETAILS: WASTE & RECYCLE CONFERENCE 2012

ORGANISING BODY: WALGA, DEC and WMAA

LOCATION/ DATE: The Esplanade Hotel, Fremantle WA, 11-14 September 2012

THEME: GREAT EXPECTATIONS-FOSTERING AN ENVIRONMENT FOR COMMITMENT

ESTIMATED COST/ PERSON: \$1,560 (estimated)

ESTIMATED TOTAL COST: \$_____ BUDGET AVAILABLE: \$12,000

ASSESSMENT CRITERIA	FACTOR		
	LOW (1)	MED (2)	HIGH (3)
Current/ Future Direction			X
Council Objective			X
Topical/ Relevant		X	
Business Objective		X	
Historic/ Expected Attendance			X
* Other Sources of Information		X	
Content Similarity		X	
TOTAL			$\frac{17}{21}$

* Low score means high availability of data.

Conference Report Required? (✓) **Y**
☒ **N**
☐

Recommendation: _____ That Councillors and Officers attend. _____

Prepared By: Steve Fitzpatrick Manager Project Development

Chief Executive Officer: _____



10 CONFIDENTIAL MATTERS FOR WHICH THE MEETING MAY BE CLOSED TO THE PUBLIC

Nil

11 GENERAL BUSINESS

The Chairman advised that a Waste & Recycling Expo was being held at the Sydney Convention & Exhibition Centre Darling Harbour, 21-22 November 2012.

12 FUTURE MEETINGS OF THE RESOURCE RECOVERY COMMITTEE

The next meeting of the Resource Recovery Committee will be held on **Thursday, 6 September 2012 (if required)** at the EMRC Administration Office, 1st Floor, Ascot Place, 226 Great Eastern Highway, Belmont WA 6104 commencing at 5.00pm.

Future Meetings 2012

Thursday	6 September (if required)	at	EMRC Administration Office
Thursday	4 October	at	EMRC Administration Office
Thursday	22 November (if required)	at	EMRC Administration Office

13 DECLARATION OF CLOSURE OF MEETING

There being no further business, the Chairman declared the meeting closed at 6:05pm.