



Cloughton Reserve is one of the long-standing 'missing links' in the path network.



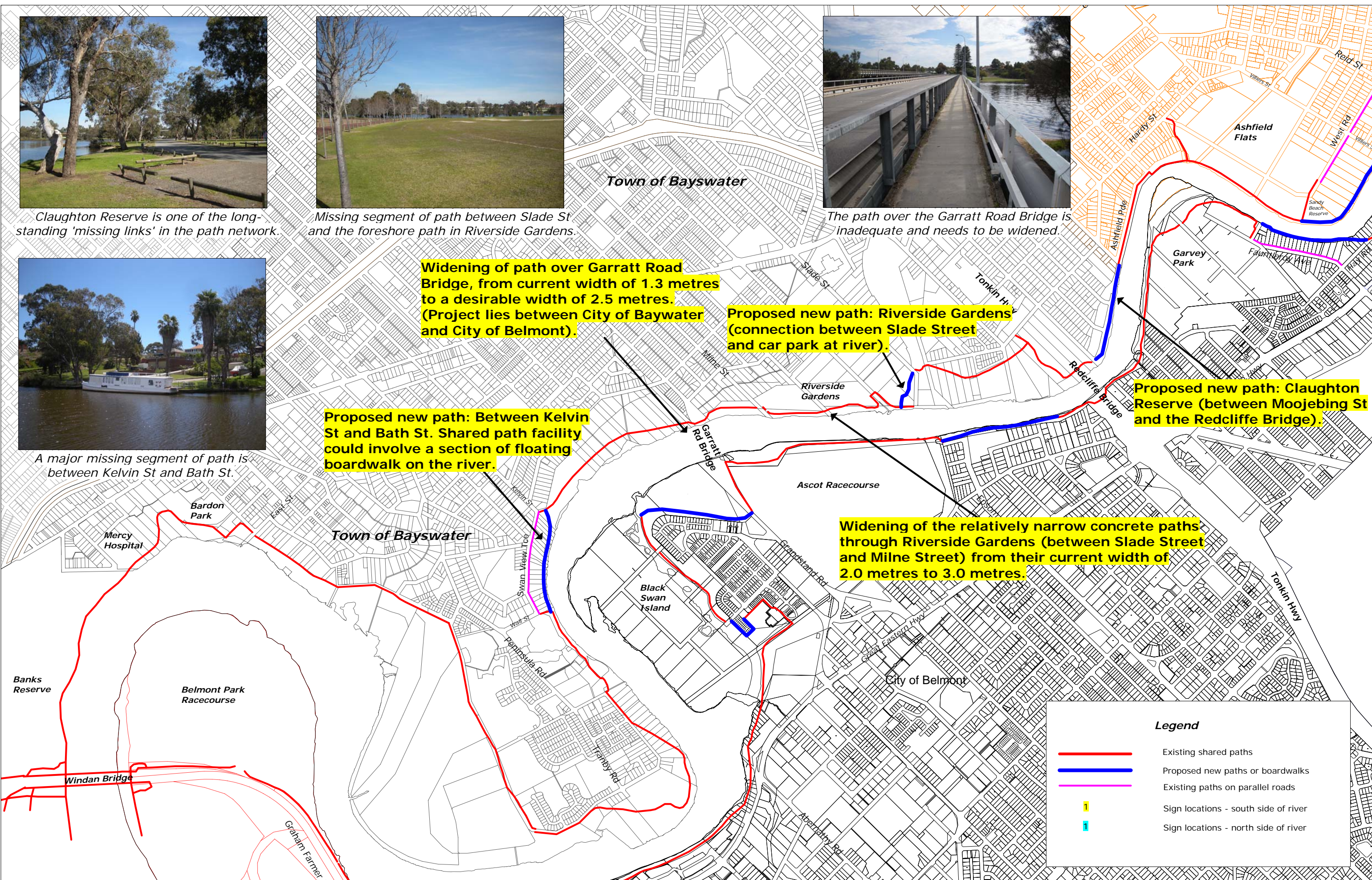
Missing segment of path between Slade St and the foreshore path in Riverside Gardens.



The path over the Garratt Road Bridge is inadequate and needs to be widened.



A major missing segment of path is between Kelvin St and Bath St.



Widening of path over Garratt Road Bridge, from current width of 1.3 metres to a desirable width of 2.5 metres. (Project lies between City of Baywater and City of Belmont).

Proposed new path: Riverside Gardens (connection between Slade Street and car park at river).

Proposed new path: Between Kelvin St and Bath St. Shared path facility could involve a section of floating boardwalk on the river.

Proposed new path: Cloughton Reserve (between Moojebing St and the Redcliffe Bridge).

Widening of the relatively narrow concrete paths through Riverside Gardens (between Slade Street and Milne Street) from their current width of 2.0 metres to 3.0 metres.

Legend

- Existing shared paths
- Proposed new paths or boardwalks
- Existing paths on parallel roads
- I Sign locations - south side of river
- I Sign locations - north side of river