



WAVE. All things considered, the best in weed control

Perth, 15 May 2015

Worldwide developments of Wave

- General trend of leaving chemical use;
- Article The Lancet;
- European market is speeding up: NRW/DE per 1.1.2015, Belgium per 1.1.2015, Netherlands March 2016; France per 2020;
- Competition is coming from cleaning/high pressure industry: knowhow?;
- In manual carrier driven market large competition;
- Focus on European market until end of 2016;
- Focus on Canada and Australia from 2016;
- Focus on US from 2018.

Thermal method

Principle:

- Lethal tissue temperature: 58 C (visual damage: necrosis, dehydration)
- Sublethal $T < 58\text{ C}$: growth suppression; disruption of cell functionality (non visual)

Formula:

Heat transfer (Q) =

Surface area of leaf x

Δ temperature x

heat-transfer coefficient

HOT FLAME CONVECTION

HOT AIR

IR

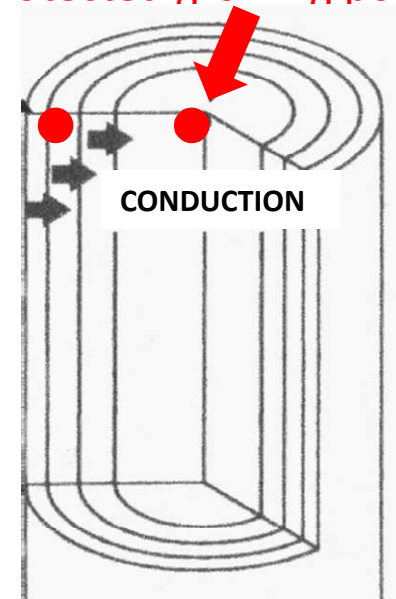
RADIATION

STEAM

CONDENSATION

CONDUCTION

Protected growing point



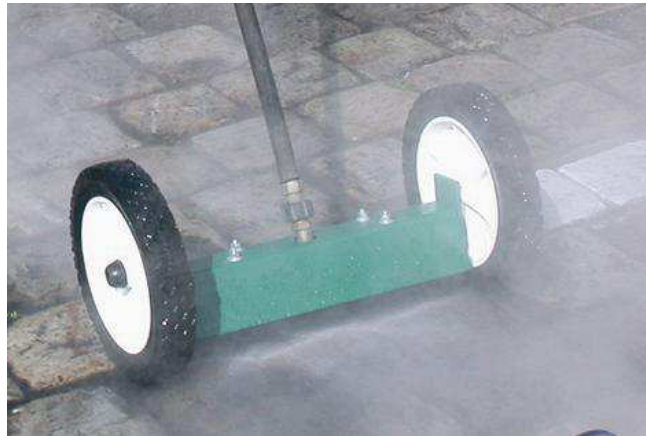
Conductive heat transfer

- Hot water machine
- Steam machine

| | Specific heat capacity | | Heat-transfer coefficient | Specific energy |
|----------------|------------------------|-------------|---------------------------|-----------------|
| | kJ/kg K | | W/mK | kJ/kg |
| HOT AIR | (100°C, 1 bar) | 1.01 | 0.030 | 101 |
| WATER | (100°C, 1 bar) | 4.18 | 0.682 | 418 |
| STEAM | (100°C, 1 bar) | 2.08 | 0.025 | 2674 |

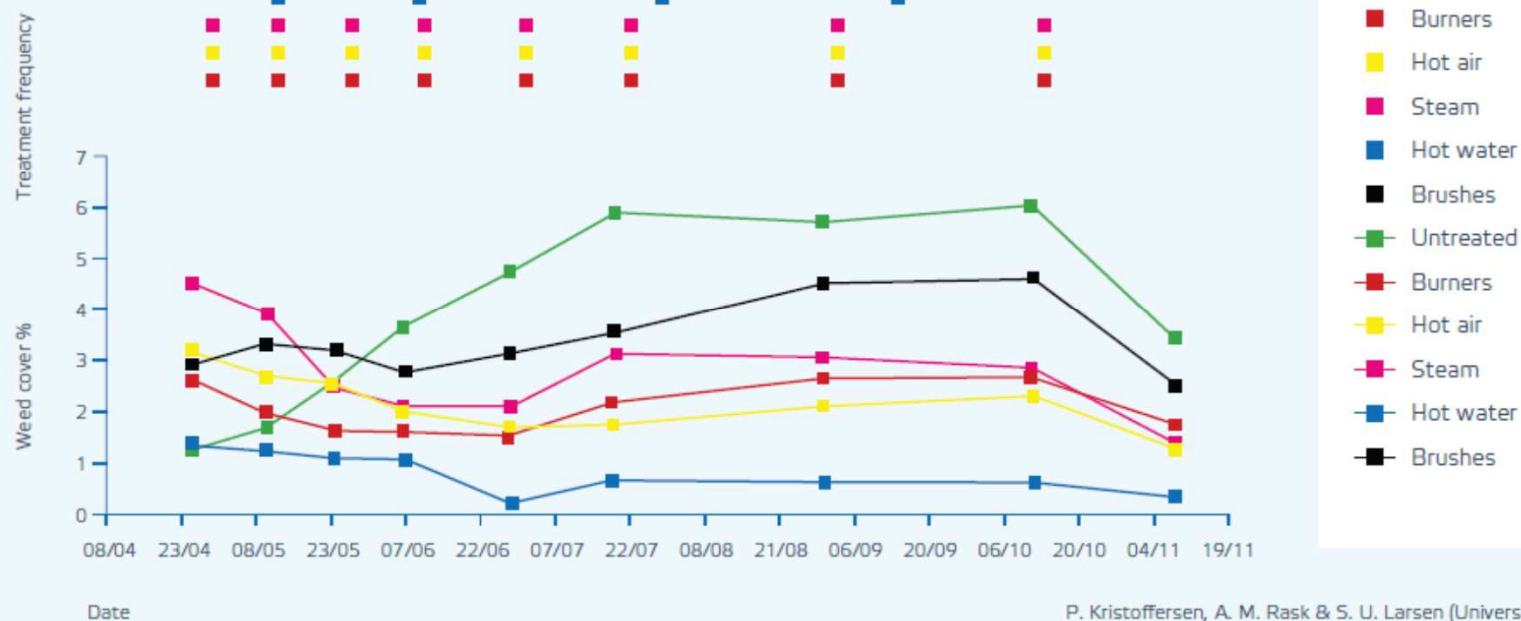
ΔT is small

“Water is a good conductor and has a high specific energy”



Which timing?

- Graph Kristoffersen



P. Kristoffersen, A. M. Rask & S. U. Larsen (University of Copenhagen)
With hot water the best result is achieved with a low treatment frequency.

6.2. Which technique?

| | Chemical | Mechanical | Burning | Hot air | WAVE hot water |
|-----------------------------|---|---|---|---|---|
| Environmental impact | X Very high | ✓ Moderate | ✓ Moderate | X High | ✓ Low |
| Surface | ✓ Any surface | X No porous or soft surfaces | X No flammable surfaces | X No flammable surfaces | ✓ Any surface |
| Health and safety | X Protective clothing needed against chemicals | X Hearing and dust protection needed | X Protective clothing needed against heat | X Protective clothing needed against heat | ✓ No protective clothing needed |
| Noise | ✓ Little noise | X High noise level | ✓ Little noise | ✓ Little noise | ✓ Little noise |
| Applicability | X Not permitted everywhere | X Not suitable for use around lamp posts and obstacles | X Less suitable for use around lamp posts and obstacles | X Less suitable for use around lamp posts and obstacles | ✓ Suitable for touch ups with hand lance |
| Surroundings | X Undesired damage to adjoining greenery. Cannot be used in water-collection area | X Undesired wear to pavement, residual metal particles and rust patches | X Undesired damage to adjoining greenery | X Undesired damage to adjoining greenery | ✓ Directed weed control without damage to the surroundings |
| Energy consumption | ✓ Low | X Higher than WAVE | X Much higher than WAVE | X Much higher than WAVE | ✓ Low |
| Activities | X Resistant weed species survive | X Mows away foliage, rapid regrowth | X Damages the foliage. No effect on the roots | X Damages the foliage. No effect on the roots | ✓ Kills the plant as well as the roots |
| Effectiveness | ✓ Depending on the dosage, very high (2 to 3 treatments per year) | X Low (5 to 10 treatments per year) | X Low (4 to 8 treatments per year) | X Low (5 to 10 treatments per year) | ✓ High (2 to 6 treatments per year) |
| Particulars | X Socially unacceptable. Requires certification and strict legislation | X Requires sweeping afterwards | X Cannot be used during extreme drought | X Cannot be used during extreme drought | ✓ No resistant weeds. Suppresses weeds. Also cleaning work can be done with hand machines |

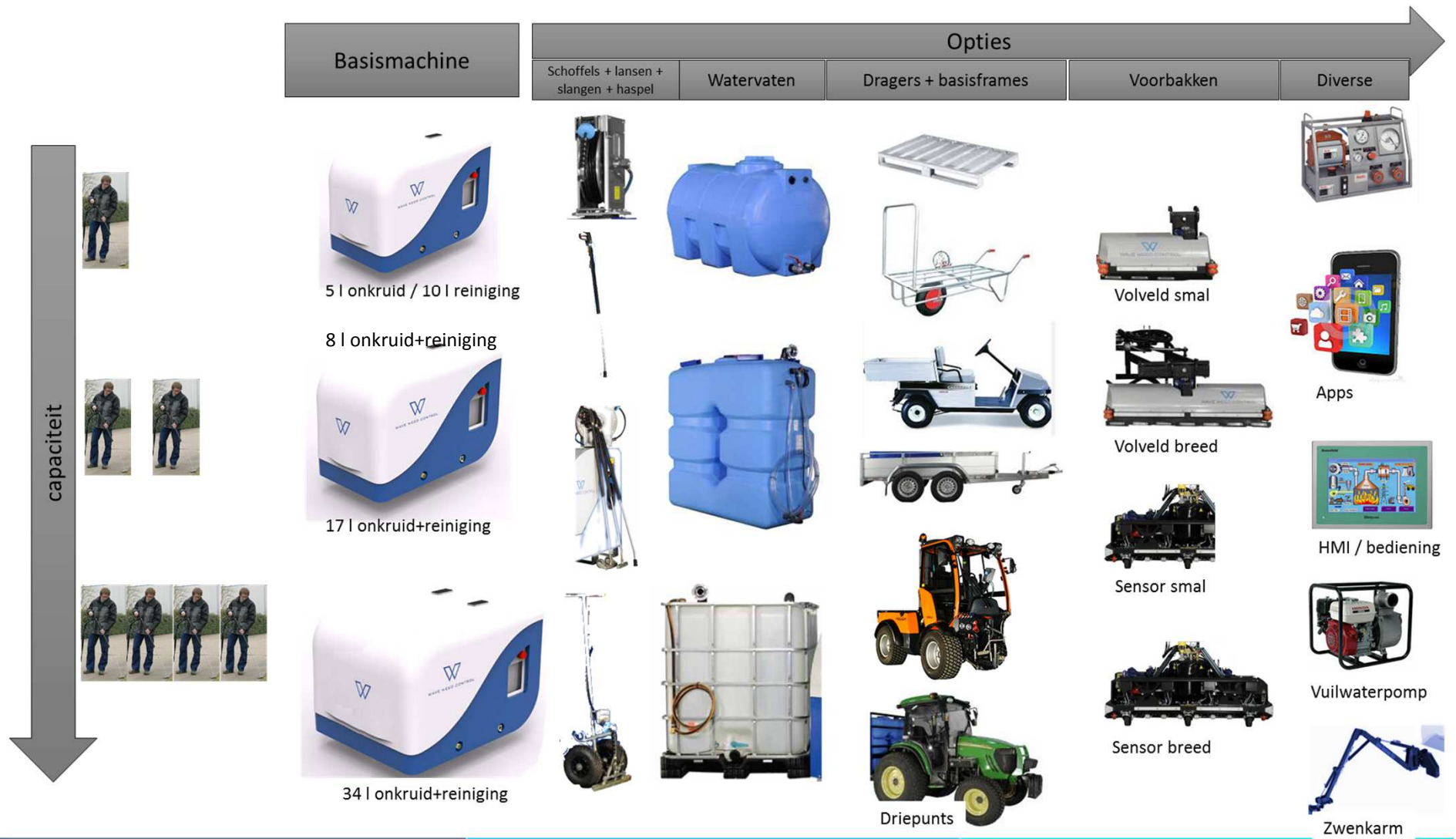
WAVE new product portfolio

What will you get:

Complete portfolio which can compete with all the competitors in all the countries

- Design;
- Touch screen;
- Cleaning possibility;
- Different power: motor /220 Volt / 110V/ 12-24 V;
- Hybrid, electrical;
- Lowest TCO and investment;
- Less spare parts;
- Easy to work with: member of the Wave Family.

WAVE new portfolio development



Invasive Species

- Research results;
- Translation into practical manuals;
- Expectation pattern by type;
- Training Model;

Co operationship with universities in Europe and North America

To bring right solution into the market.

WAVE Academy

Two Levels

Level 1:

Sharing Knowledge between the countries

Level 2:

- Education training for customers; engineers, project managers, engineers. Conforms to current policy.
- WAVE Academy product trainings:
Aim to create more understanding and more market opportunity for WAVE philosophy and product portfolio
- Process Q4 2015

Erik Bretveld
e.bretveld@waveonkruidbestrijding.nl
+31 (6) 5579233



WAVE WEED CONTROL