

# Catchment Groups:

What do they do?  
What are the benefits?  
How can you join?

Speaker: Kathryn Johnson  
Chairperson – Susannah Brook Catchment Group



# What is a Catchment Group?

- \* A group of community volunteers committed to the sustainable management of natural resources within a waterway catchment, both on public and private property.
- \* Strive towards the sustainable land use balance
  - \* Environmental / Economic / Social considerations



# What do they do?

- \* The main aim of a Catchment Group is to improve the water quality of a waterway or wetland.
- \* Other key focus areas include:
  - \* Education
  - \* Vegetation
  - \* Biodiversity
  - \* Land management
  - \* Climate change
  - \* Community capacity and support



# Catchments and Catchment Groups in Perth's Eastern Region

- \* 5 catchment areas:

- \* Blackadder Creek and Woodbridge Creek
- \* Helena River
- \* Jane Brook
- \* Susannah Brook
- \* Wooroloo Brook

- \* Active Catchment Groups:

- \* Blackadder Woodbridge Catchment Group
- \* Helena River Catchment Group
- \* Lower Helena Association
- \* Friends of Piesse Brook
- \* Jane Brook Catchment Group
- \* Susannah Brook Catchment Group

# What are the benefits of Catchment Groups?

## \* Catchment Groups:

- \* Identify focus areas within a catchment
  - \* e.g. regeneration/revegetation activities to establish wildlife corridors; threatened species protection; weed management; educational nature walks etc.
- \* Support Sub-catchment Groups and Friends Groups with on-ground NRM projects
- \* Assist with sourcing grant funding for projects
- \* Liaise closely with City of Swan, Shire of Mundaring, City of Kalamunda and EMRC for support
- \* Form partnerships with organisations and land owners to sustainably manage catchments areas

# What are the benefits of Catchment Groups?

- \* Local volunteers are supported in their efforts to conserve, protect and restore their local environment
- \* Volunteers feel great!
- \* The environment benefits too!

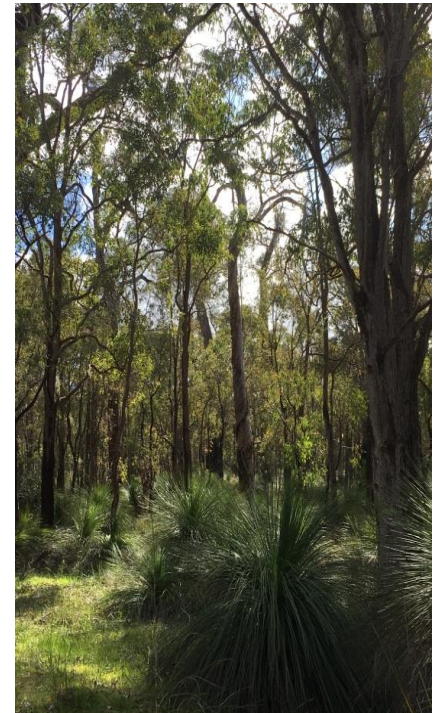


# Why join a Catchment Group?

- \* A fantastic way for you to take action towards living sustainably
- \* Opportunity for whole family involvement
  - \* e.g. nature walks, planting seedlings, litter clean-ups
- \* Valuable role-modelling opportunity for us to show our kids how to manage our environment sustainably
- \* Personal satisfaction that you are making a real difference to the environment in your local community

# How can you join?

- \* Identify a catchment group you would like to join
- \* How would you like to be involved? e.g. on-ground, hands-on activities, committee role, writing grant applications
- \* Register your interest today at the Catchment Group stall – Mundaring Hall
- \* Contact EMRC:
  - \* Jaya Vaughan on (08) 9424 2245 or email [jaya.vaughan@emrc.org.au](mailto:jaya.vaughan@emrc.org.au)
  - \* Miroslav Vujaklija on (08) 9424 2264 or email [miroslav.vujaklija@emrc.org.au](mailto:miroslav.vujaklija@emrc.org.au)
  - \* Nicole Arielli on (08) 9424 2262 or email [nicole.arielli@emrc.org.au](mailto:nicole.arielli@emrc.org.au)





# Catchment Groups need you!

Please join us!

Let's work together for the benefit of  
sustainable healthy catchments and  
healthy, active communities.