



Revegetation Techniques

Presented by: Jamie Falzon



National
Landcare
Program



natural resource
management program



Our Property



- ▶ 5 Acres in Chidlow adjoining Cooks Brook, 200m downstream of Lake Leschenaultia
- ▶ Cleared for Development
- ▶ 90% cleared
- ▶ Sloping, rocky and infertile

20 Million Trees Program

- ▶ In early 2017 we applied to the program and after an assessment we were accepted
- ▶ A revegetation plan was generated and vetted and approved by the Mundaring Shire Fire Officer
- ▶ Winter 2017, 550 pieces of tube stock were supplied, planted and protected under the programs funding
- ▶ We engaged a commercial contractor to spray the paddock a month before hand for weed control
- ▶ In early summer 2017 we began investigating options for watering the plantings to get them through their first two dry seasons

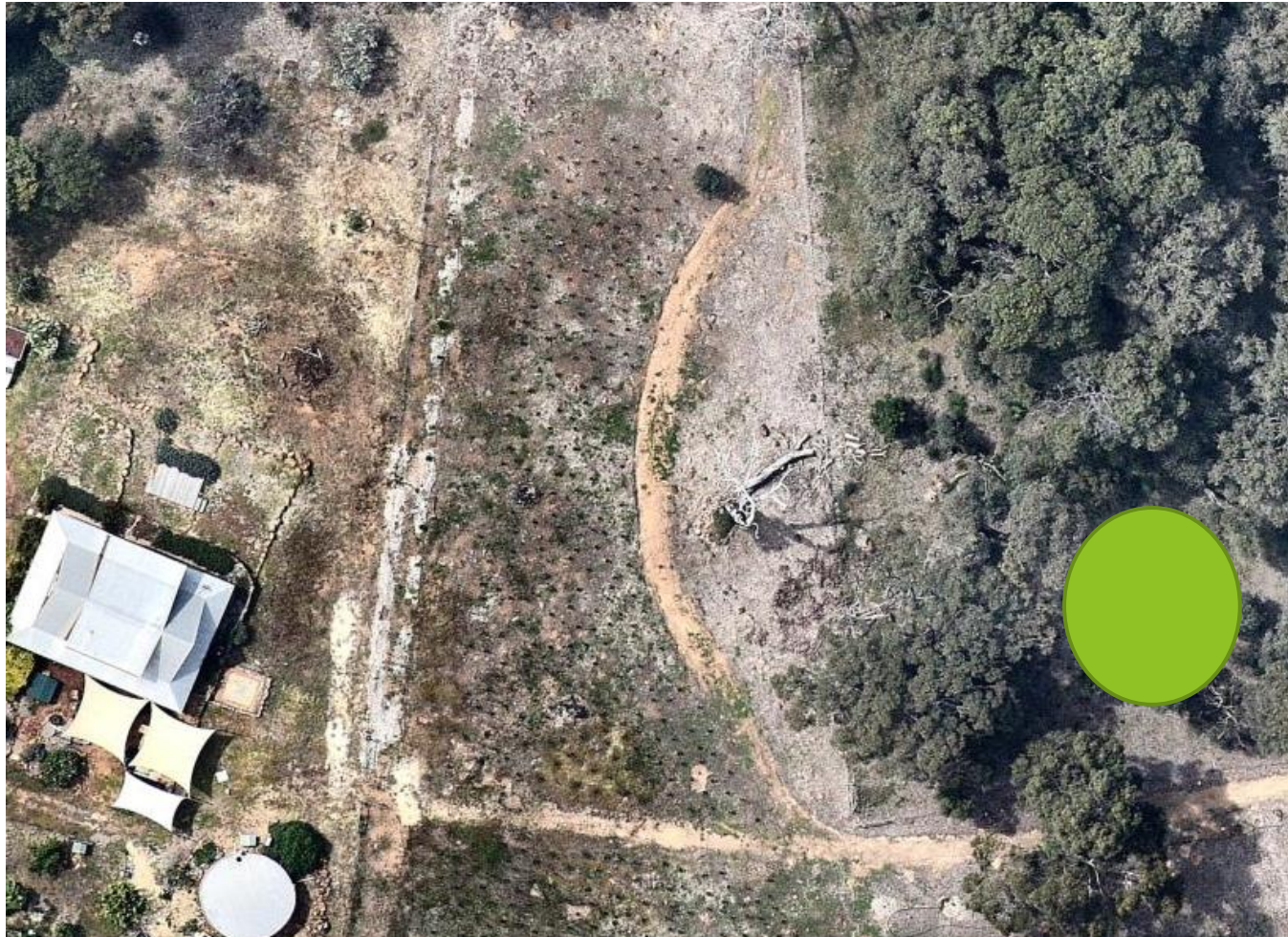
The Planting (southern Side of paddock)



The Planting (Northern Side of Paddock)



The Planting (Infill section)



The Planting (Panorama)



Planting/Protection Technique



- ▶ 3 x Stakes
- ▶ Netting Sleeve
- ▶ 2 x Cable ties

What was planted Northern Jarrah Forest veg complex

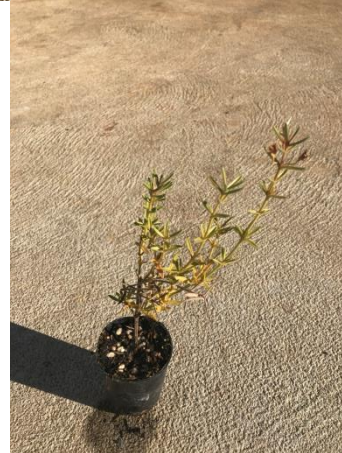
Trees - 1/6 over storey



Shrubs - 2/6 mid storey



Ground
covers - 3/6



Watering Techniques

- ▶ We initially went down the path of 25mm line feed off our 50mm main line from the bore water holding tank, running out to a Hunter PGP-ADJ head.
- ▶ This achieved a radius of 14 m on our pump
- ▶ Pros - Don't have to move it around
- ▶ Cons - Proved to be beyond our budget

PGP-ADJ

Radius: 6.4 to 15.8 m
Flow: 0.10 to 3.22 m³/hr
Flow: 1.7 to 53.7 l/min
Inlet Size: 3/4"



Watering Techniques

- ▶ Then we found this at a local hardware store for \$45
- ▶ Standard 12 mm hose fitting
- ▶ This achieved a radius of 11 m on our pump
- ▶ Pros - Fitted the budget
- ▶ Cons - Have to move it around



The Results



The Results



The Results



The Results



The Results



The Results



The Results



The Results



The Results (TCUP Program 2 years old)



Maintenance Tips

- ▶ The spacing of the plantings makes spraying a challenge. Ideal solution, hand drawn 12 volt sprayer.
- ▶ Hand weeding is not difficult if you stay on top of it
- ▶ But be careful not to pull your planting out with weeds
- ▶ Mulch is your best friend



Be careful when weeding



Thankyou - any questions?