

Hazelmere Resource Recovery Park

Commercial and Industrial Waste Sorting Facility

Fees and Charges — 2019/2020



The Eastern Metropolitan Regional Council wishes to advise of the fees and charges applicable to the entry and use of the Hazelmere Resource Recovery Park for the Commercial and Industrial Waste Sorting Facility.

Effective 1 July 2019. (All prices GST Inclusive.)

Dry Commercial and Industrial Waste	\$148.50 / tonne
Minimum Charge (0.5 tonne)	\$74.25
Bulk Verge Collections	\$165.00 / tonne
Minimum Charge (0.5 tonne)	\$82.50

Additional Charges for Recovered Items

Tyres - Passenger car	\$5.50 each
Tyres - Passenger car (with rim)	\$7.50 each
Tyres - Light truck, Light Industrial	\$11.00 each
Tyres - Light truck, Light Industrial (with rim)	\$22.00 each
Fridges & Freezers / White Goods / Air Conditioning Units	\$33.00 each
Car Batteries	\$11.00 each

Fee for special handling requirements **\$160.00 per load**

Note 1: If a C&I waste load is contaminated by more than 50% (by visual inspection), a surcharge of 50% of the disposal charge per tonne will apply plus a handling fee of \$160 (inc. GST) will be applied to the consignment.

Note 2: Tyres other than mentioned above will be required to be removed from site by the customer.

Note 3: Contracts with attractive discounts available to major customers and local governments.

Note 4: In the event that the weighbridge at Hazelmere Resource Recovery Park is not operational, vehicles will be charged according to the estimated waste volumes in cubic metres converted to tonnes.

Note 5: Upon the commissioning of new weighbridges at the Hazelmere Resource Recovery Park, all inward and outward material will be charged on a per tonne rate and not cubic metre(m3) rate.

Operating Hours: Monday to Friday: 7:00am – 3:00pm

Site Location: 77 Lakes Road, Hazelmere WA. **Ph:** 08 9274 7807

What we DO accept



Dry C&I Waste



Skip Bins



Roll On Roll Off

Additional charges for recovered items applies



Mattresses



Tyres



Car Batteries



White Goods

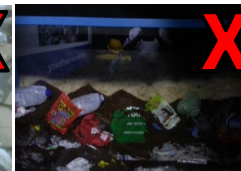
What we DON'T accept



Chemical Waste



E-Waste



Food/Green Waste



Asbestos

Eastern Metropolitan Regional Council

• 226 Great Eastern Highway, Belmont WA 6104 • PO Box 234, Belmont WA 6984 • Tel: 08 9424 2222 • Fax: 08 9277 7598 • Email mail@emrc.org.au • Web www.emrc.org.au

